

Public Document Pack

Penallta House,
Tredomen Park,
Ystrad Mynach,
Hengoed CF82 7PG

Ty Penallta,
Parc Tredomen,
Ystrad Mynach,
Hengoed CF82 7PG



www.caerphilly.gov.uk
www.caerffili.gov.uk

For all enquiries relating to this agenda please contact Charlotte Evans
(Tel: 01443 864210 Email: evansca1@caerphilly.gov.uk)

Date: 18th February 2015

Dear Sir/Madam,

A meeting of **Education for Life Scrutiny Committee** will be held in the **Sirhowy Room, Penallta House, Tredomen, Ystrad Mynach** on **Tuesday, 24th February, 2015** at **5.30 pm** to consider the following agenda item, which was omitted when the agenda was sent to print and is now available.

Yours faithfully,

A handwritten signature in blue ink that reads 'Chris Burns'.

Chris Burns
INTERIM CHIEF EXECUTIVE

A G E N D A

9 Pupil Attainment at Foundation Phase, Key Stage 2, Key Stage 3 and Key Stage 4 (2014).

Circulation:

All Members And Appropriate Officers

A greener place Man gwyrddach



This page is intentionally left blank



EDUCATION FOR LIFE SCRUTINY COMMITTEE – 24TH FEBRUARY 2015

SUBJECT: PUPIL ATTAINMENT AT FOUNDATION PHASE, KEY STAGE 2,
KEY STAGE 3 AND KEY STAGE 4 (2014)

REPORT BY: ACTING DEPUTY CHIEF EXECUTIVE

1. PURPOSE OF REPORT

- 1.1 The attached report was considered by Cabinet on 4th February 2015.
- 1.2 Members are asked to consider the report and debate and challenge its content.

Author: Edward Pryce, Challenge Adviser, Education Achievement Service (EAS)

Appendices:

Appendix 1 Report to Cabinet on 4th February 2015

This page is intentionally left blank



CABINET - 4TH FEBRUARY 2015

SUBJECT: PUPIL ATTAINMENT AT FOUNDATION PHASE, KEY STAGE 2, KEY STAGE 3 AND KEY STAGE 4 (2014)

REPORT BY: EDWARD PRYCE, CHALLENGE ADVISER (EAS)

1. PURPOSE OF REPORT

1.1 The report is to inform members of pupils' attainment in teacher assessment at Foundation Phase, Key Stage 2, Key Stage 3 and final Key Stage 4.

2. SUMMARY

- 2.1 All schools are subject to rigorous reporting and monitoring of standards each year, with the principal focus in key stages 2 and 3 being on English/Welsh first language, mathematics and science, and the percentage of pupils achieving the expected level in all three core subjects (core subject indicator – CSI).
- 2.2 In the Foundation Phase (formerly key stage 1), following the implementation of a revised curriculum, schools reported for the first time in 2012 on the performance of 7 year olds in language, literacy and communication (English or Welsh language) (LLC), mathematical development (MD), and personal and social development, wellbeing and cultural development (PSDWCD). The foundation phase indicator (FPI) measures the percentage achieving the expected outcome in all three areas of learning.
- 2.3 Whilst assessment of LLC and MD is broadly comparable to performance in English/Welsh and mathematics at KS2 and KS3, PSDWCD is not the same as science. Instead it provides a holistic assessment of pupils' wellbeing and the extent to which they are able to inter-relate appropriately with those around them. It also reflects a growing awareness of culture and diversity and of the environment in which they live. As such, it is an important measure of their overall 'readiness' for learning. Achievement in each of LLC, MD and PSDWCD is measured in relation to one of six 'outcome' descriptors.
- 2.4 The 'average' pupil is expected to achieve outcome 5 by the end of the foundation phase (formerly national curriculum level 2), with more able pupils achieving outcome 6 (formerly level 3). At the end of key stages 2 and 3, the 'average' pupil is expected to achieve level 4 and above and level 5 and above respectively and more able pupils are expected to achieve level 5 and 6 respectively.
- 2.5 At Key Stage 4 all schools are subject to rigorous reporting and monitoring of standards each year. The following key performance measures are used to evaluate and compare the full range of achievement within and across local authorities:
- Level 2 threshold including English or Welsh first language and mathematics
 - Level 2 threshold
 - Level 1 threshold

- CSI (Core Subject Indicator)
- Capped points score (replacing the previous Average Wider Point Score measure)
- Level 2 qualification (equivalent to GCSE A*-C) in English or Welsh first language
- Level 2 qualification (equivalent to GCSE A*-C) in mathematics
- Level 2 qualification (equivalent to GCSE A*-C) in science.

- 2.6 Of these, the Level 2 threshold including English/Welsh first language and mathematics and the capped point score are particularly important and WG publishes local authority benchmarks based on these each year.
- 2.7 Both national and global research shows that there is a significant link between socio-economic background and educational performance. The Welsh Government's statistical bulletin, "Achievement and Entitlement to Free School Meals in Wales", published every March, shows that the performance of pupils eligible for free school meals (FSM), which is a measure of socio economic deprivation, is lower than for their non eligible counterparts at all key stages. The Welsh Government therefore uses the percentage of pupils eligible for free schools meals as a proxy indicator of deprivation for both individual schools and local authorities.
- 2.8 According to the latest available figures for the percentage of pupils eligible for FSM, Caerphilly is the 3rd most socioeconomically disadvantaged LA in Wales. This contextualisation is not used to reduce ambition, nor to set limiting targets, but to show that if Caerphilly performance is higher than 20th, then performance is better than expected. Our aspiration is still to improve our position in local authority ranking tables in spite of deprivation levels, overcoming the link between deprivation and poor attainment.
- 2.9 A detailed analysis of the performance of Caerphilly pupils is contained within the main report.

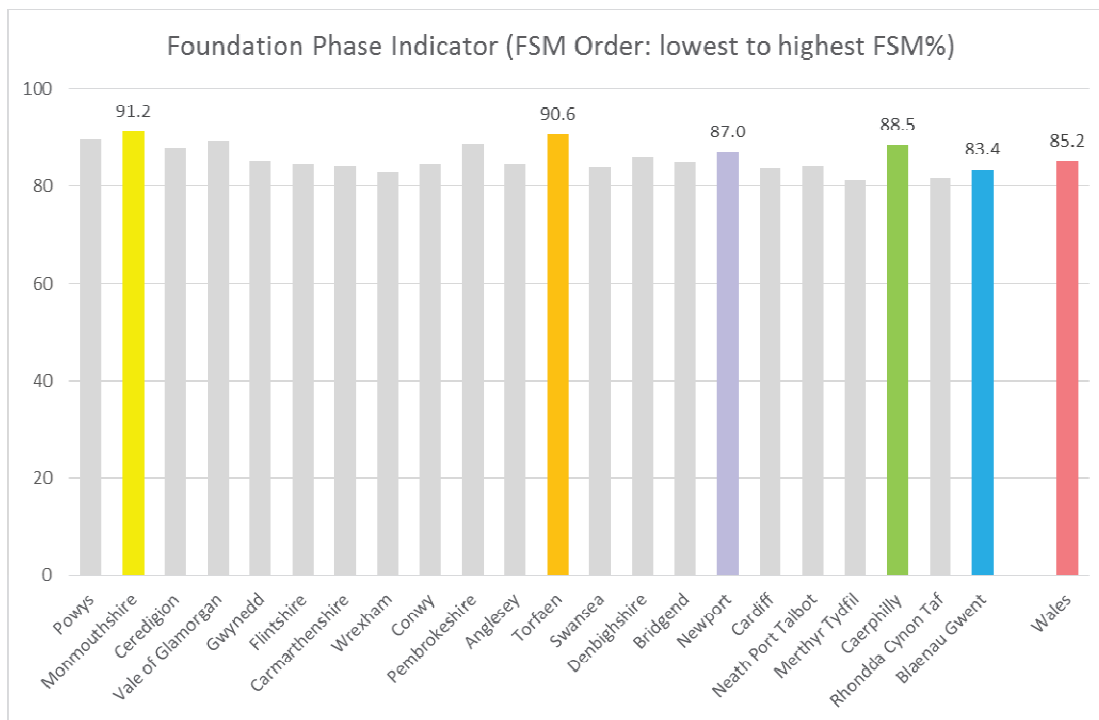
3. LINKS TO STRATEGY

- Children and Families (Wales) Measure 2010
- Child Poverty Strategy for Wales
- Child Poverty Strategy 2014 – 2017 (UK)
- Corporate Improvement Plan
- The Learning Theme of Caerphilly Delivers
- The LSB Single Integrated Plan

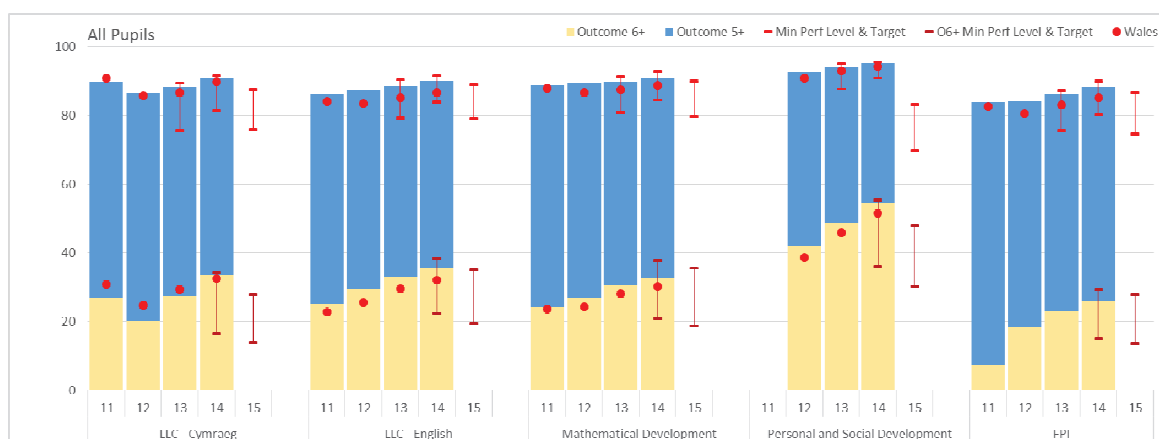
4. THE REPORT

4.1 Foundation Phase

- 4.1.1 Performance in the foundation phase continues to improve, with 88.5% pupils achieving the foundation phase indicator (FPI), an increase from 85.0% in 2013. Caerphilly currently ranks 6th in Wales for the FPI when compared with other local authorities, which is significantly above the LA's FSM ranking (20th, 2014 PLASC data).



4.1.2 There have been improvements at both the expected level (outcome 5+) and at the higher level (outcome 6) in all indicators.



4.1.3 Percentage of pupils achieving Outcome 5+:

	FPI	LLC English	LLC Welsh	Mathematical Development	Personal and Social Development
Caerphilly 2014	88.52 ↑	90.05 ↑	92.27 ↑	91.10 ↑	95.38 ↑
Caerphilly 2014 school target range	80 - 90	85 - 91	78 - 90	85 - 93	91 - 95
Caerphilly 2013	85.04	86.94	90.68	89.41	93.82
Wales 2014	85.2	86.6	89.8	88.7	94.2

4.1.4 Percentage of pupils achieving Outcome 6:

	LLC English	LLC Welsh	Mathematical Development	Personal and Social Development
Caerphilly 2014	34.89 ↑	33.51 ↑	32.54 ↑	53.26 ↑
Caerphilly 2013	29.47	27.97	29.23	46.54
Wales 2014	32.2	32.5	30.3	51.5

4.1.5 Performance in the Foundation Phase Indicator has improved by 3.48 percentage points and is ranked 6th in Wales.

4.1.6 Performance in LLC English has improved by 3.11 percentage points at outcome 5+, and by 5.42 at outcome 6. Performance is ranked 5th in Wales at outcome 5+.

4.1.7 Performance in LLC Welsh has improved by 1.59 percentage points at outcome 5+ and by 5.54 at outcome 6. Performance is ranked 4th in Wales at outcome 5+.

4.1.8 Performance in mathematical development has improved by 1.69 percentage points at outcome 5+ and by 3.31 at outcome 6. Performance is ranked 6th in Wales at outcome 5+.

4.1.9 Performance in PSDWCD has improved by 1.56 percentage points at outcome 5+ and by 6.72 at outcome 6. Performance is ranked 8th in Wales at outcome 5+.

4.1.10 Performance is close to the top of the school target range for FPI, LLC English and mathematical development and marginally above the target range for LLC Welsh and PSDWCD.

4.1.11 Gender differences at outcome 5+ (boys' performance – girls' performance):

	FPI		LLC English		LLC Welsh		Mathematical Development		PSDWCD	
	2013	2014	2013	2014	2013	2014	2013	2014	2013	2014
Caerphilly	-8.83	-7.80	-9.49	-7.56	-3.96	-7.25	-4.03	-4.90	-6.00	-4.25
Wales	-8.4	-8.5	-7.83	-8.3	-9.34	-7.9	-3.95	-5.9	-5.67	-5.2

4.1.12 Gender differences at outcome 6 (boys' performance – girls' performance):

	LLC English		LLC Welsh		Mathematical Development		PSDWCD	
	2013	2014	2013	2014	2013	2014	2013	2014
Caerphilly	-12.53	-14.33	-18.65	-8.95	-2.52	-1.34	-18.53	-22.42
Wales	-11.20		-15.03		1.86		-17.17	

4.1.13 Gender differences have reduced in LLC English and PSDWCD at outcome 5+ but increased for LLC Welsh and mathematical development. The opposite can be said for outcome 6, where gender differences have reduced in LLC Welsh and mathematical development and increased for LLC English and PSDWCD.

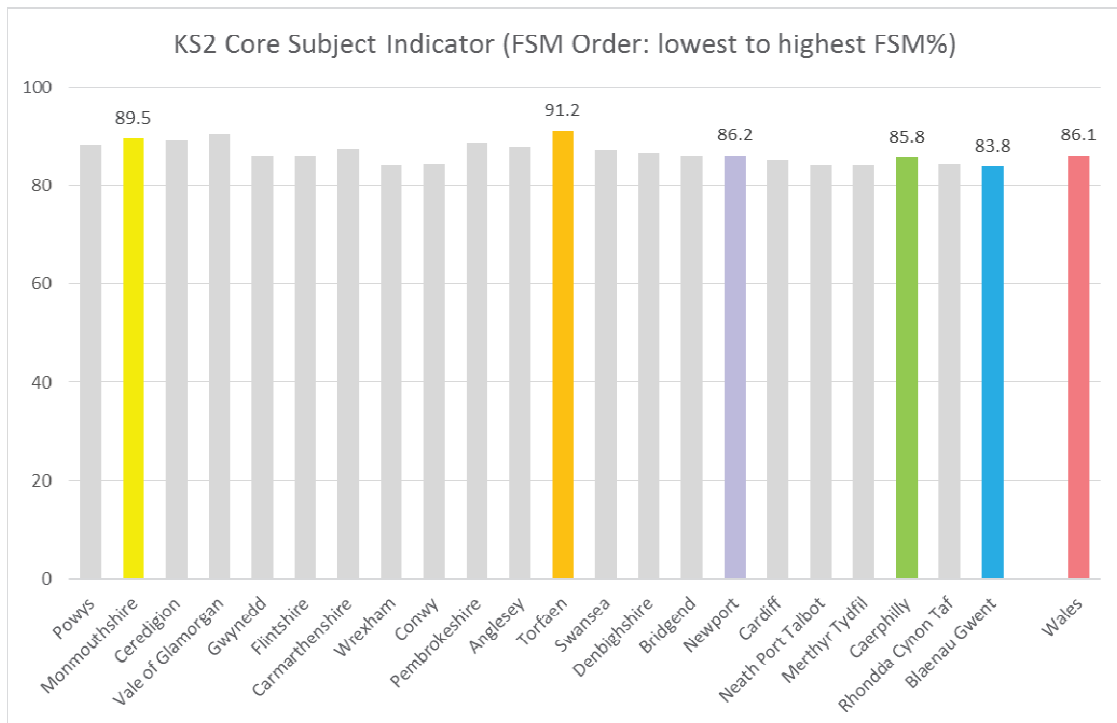
4.1.14 Wales rankings: When compared with other LAs in Wales, performance in Caerphilly is significantly higher than could be expected and above the national figures for all areas of learning. Improvements in performance have increased the LA's rankings against other LAs in LLC English, mathematical development and PSDWCD. Performance in LLC Welsh has declined by one place but remains 4th in Wales.

	FPI	LLC English	LLC Welsh	Mathematical Development	PSDWCD
2014	6	5	4	6	8
2013	7	9	3	8	=12

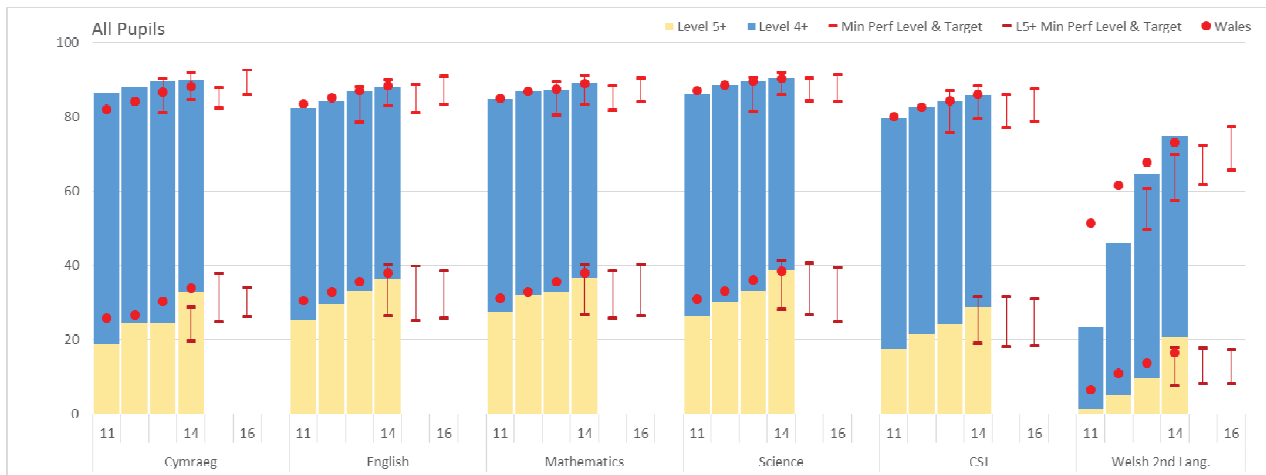
FPI		LLC English		LLC Welsh		Mathematical Development		PSDWCD			
1	Monmouthshire	91.2	1	Monmouthshire	93.4	1	Vale of Glamorgan	97.1	1	Monmouthshire	97.2
2	Torfaen	90.6	2	Torfaen	93.0	2	Monmouthshire	96.1	2	Torfaen	93.2
3	Powys	89.6	3	Powys	91.0	3	Merthyr Tydfil	92.5	3	Vale of Glamorgan	92.4
4	Vale of Glamorgan	89.5	4	Vale of Glamorgan	90.9	4	Caerphilly	92.3	4	Pembrokeshire	91.6
5	Pembrokeshire	88.7	5	Caerphilly	90.0	5	Pembrokeshire	91.8	5	Powys	91.3
6	Caerphilly	88.5	6	Pembrokeshire	89.4	6	Neath Port Talbot	91.8	6	Caerphilly	91.1
7	Ceredigion	87.9	6	Newport	89.4	7	Powys	91.6	7	Denbighshire	90.6
8	Newport	87.0	8	Ceredigion	88.1	8	Bridgend	91.4	8	Ceredigion	90.5
9	Denbighshire	86.1	9	Denbighshire	87.4	9	Newport	91.1	9	Newport	90.0
10	Gwynedd	85.2	10	Flintshire	87.4	10	Ceredigion	90.6	10	Gwynedd	89.7
11	Wales	85.2	11	Bridgend	87.2	11	Cardiff	90.5	11	Conwy	89.7
12	Bridgend	85.1	11	Wales	86.6	12	Rhondda Cynon Taf	90.1	12	Wales	88.7
13	Anglesey	84.6	12	Anglesey	86.6	13	Wales	89.8	13	Flintshire	88.6
14	Conwy	84.5	13	Conwy	86.3	14	Gwynedd	89.4	14	Bridgend	88.3
15	Flintshire	84.5	14	Blaenau Gwent	85.8	15	Denbighshire	89.3	15	Anglesey	88.2
16	Neath Port Talbot	84.2	15	Wrexham	85.6	16	Carmarthenshire	89.2	16	Carmarthenshire	88.1
17	Carmarthenshire	84.1	16	Swansea	85.5	17	Swansea	89.0	17	Wrexham	87.7
18	Swansea	83.9	17	Cardiff	85.2	17	Torfaen	88.1	18	Neath Port Talbot	87.6
19	Cardiff	83.7	18	Neath Port Talbot	84.2	18	Anglesey	88.1	19	Cardiff	87.4
20	Blaenau Gwent	83.4	19	Rhondda Cynon Taf	82.9	19	Flintshire	87.3	20	Swansea	87.1
21	Wrexham	82.9	20	Merthyr Tydfil	82.4	20	Conwy	86.3	20	Blaenau Gwent	86.5
22	Rhondda Cynon Taf	81.8	21	Carmarthenshire	81.1	21	Wrexham	85.7	21	Rhondda Cynon Taf	86.1
22	Merthyr Tydfil	81.2				22	Blaenau Gwent	75.7	22	Merthyr Tydfil	85.3

4.2 Key Stage 2

4.2.1 Performance continues to improve, with 85.8% pupils achieving the core subject indicator (CSI) in 2014, an increase from 84.2% in 2013. Caerphilly is ranked 15th in Wales, which is higher than could be expected given the LA's FSM ranking.



4.2.2 Performance at the expected level 4+ has improved and significant gains have been made at the higher level 5+. Performance is above the national figures in Welsh (first language), mathematics, science and Welsh second language.



4.2.3 Percentage of pupils achieving level 4+:

	CSI	English	Welsh (first language)	Mathematics	Science
Caerphilly 2014	85.76 ↑	87.96 ↑	89.92 ↑	88.97 ↑	90.42 ↑
Caerphilly 2014 school target range	79-88	83-90	85-92	84-91	86-92
Caerphilly 2013	84.22	86.84	89.64	87.31	89.36
Wales 2014	86.1	88.4	88.1	88.9	90.3

4.2.4 Percentage of pupils achieving level 5+:

	English	Welsh (first language)	Mathematics	Science
Caerphilly 2014	36.46 ↑	32.77 ↑	36.76 ↑	38.52 ↑
Caerphilly 2013	33.14	24.30	32.89	32.99
Wales 2014	38.0	33.9	38.0	38.4

4.2.5 Performance in the CSI has improved by 1.54 percentage points and is ranked 15th in Wales. Performance over the last three years has improved by 6.05 percentage points.

4.2.6 Performance in English at the expected level 4+ has improved by 1.12 percentage points and by 5.81 percentage points over the last three years and is ranked 15th in Wales. Performance at the higher level 5+ improved by 3.32 percentage points and an improvement of 11.28 points over the last three years.

4.2.7 Performance in Welsh (first language) at the expected level 4+ has improved by 0.28 percentage points and 3.57 percentage points over the last three years and is ranked 10th in Wales. Performance in Welsh (first language) at the higher level 5+ has improved by a significant 8.47 percentage points and a gain of 13.89 over the last three years.

4.2.8 Performance in mathematics at the expected level 4+ has improved by 1.66 percentage points, has improved by 4.32 percentage points over the last three years, and is ranked 11th in Wales. Performance in mathematics at the higher level 5+ improved by 3.87 percentage points and 9.23 points over the last three years.

4.2.9 Performance in science at the expected level 4+ has improved by 1.06 percentage points and 4.11 percentage points over the last three years and is ranked 13th in Wales. Performance in science at the higher level 5+ has improved by 5.53 percentage points and 12.07 over the last three years.

4.2.10 Performance at the expected level 4+ for all indicators is either at the midpoint or at the top end of the school target range.

4.2.11 Gender differences at level 4+ (boys' performance – girls' performance):

	CSI		English		Welsh (first language)		Mathematics		Science	
	2013	2014	2013	2014	2013	2014	2013	2014	2013	2014
Caerphilly	-5.47	-5.27	-6.42	-6.26	-8.71	-7.24	-1.63	-3.77	-3.05	-5.27
Wales	-6.12	-6.30	-7.07	-6.9	-8.58	-8.5	-3.53	-3.8	-4.01	-4.2

4.2.12 Gender differences at level 5+ (boys' performance – girls' performance):

	English		Welsh (first language)		Mathematics		Science	
	2013	2014	2013	2014	2013	2014	2013	2014
Caerphilly	-12.37	-11.20	-16.47	-13.99	4.84	-1.76	-1.96	-6.74
Wales	-12.43		-11.29		1.15		-2.54	

4.2.13 Gender differences have reduced for the expected level 4+ in CSI, English and Welsh (first language) but increased in mathematics and science. Whilst both genders have improved, girls have improved at a faster rate.

4.2.14 At the higher level 5+ the gender gap has also reduced for English, Welsh (first language) and mathematics where girls' performance is now higher than boys. In science the gender gap has increased at the higher level 5+ due to a greater increase in girls' performance.

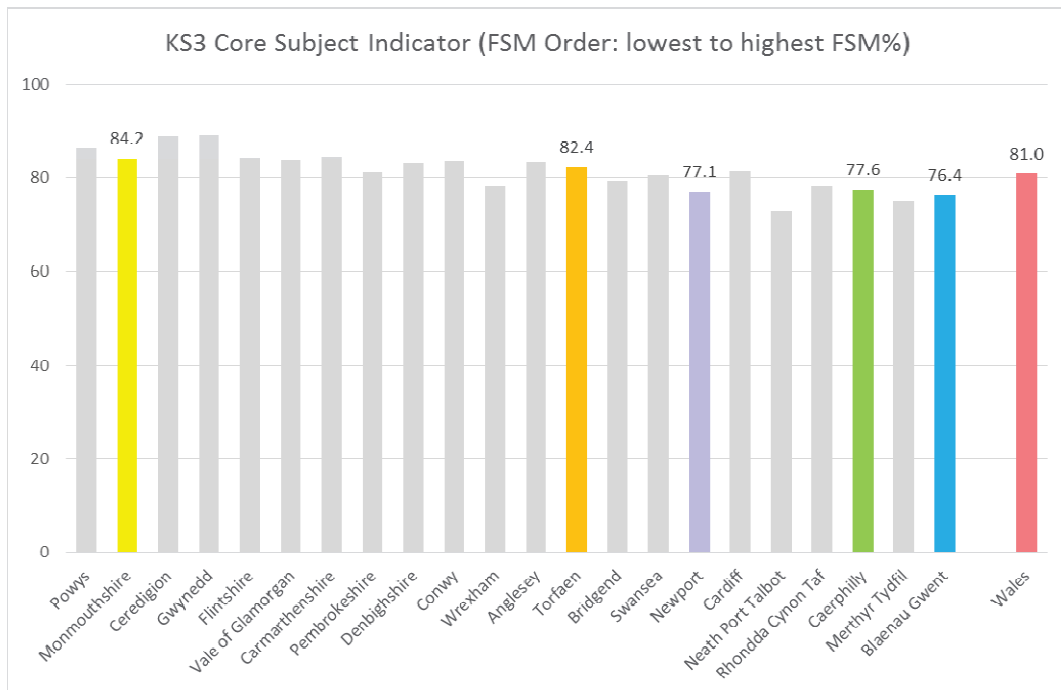
4.2.15 Wales rankings: Improvements in performance have increased the LA's rankings against other LAs in Wales in mathematics and science. The LA's rankings have declined by one place for the CSI and Welsh (first language) due to a greater rate of improvement in other LAs.

	CSI	English	Welsh (first language)	Mathematics	Science
2014	15 ↓	15	10 ↓	11 ↑	13 ↑
2013	14	15	9	13	15

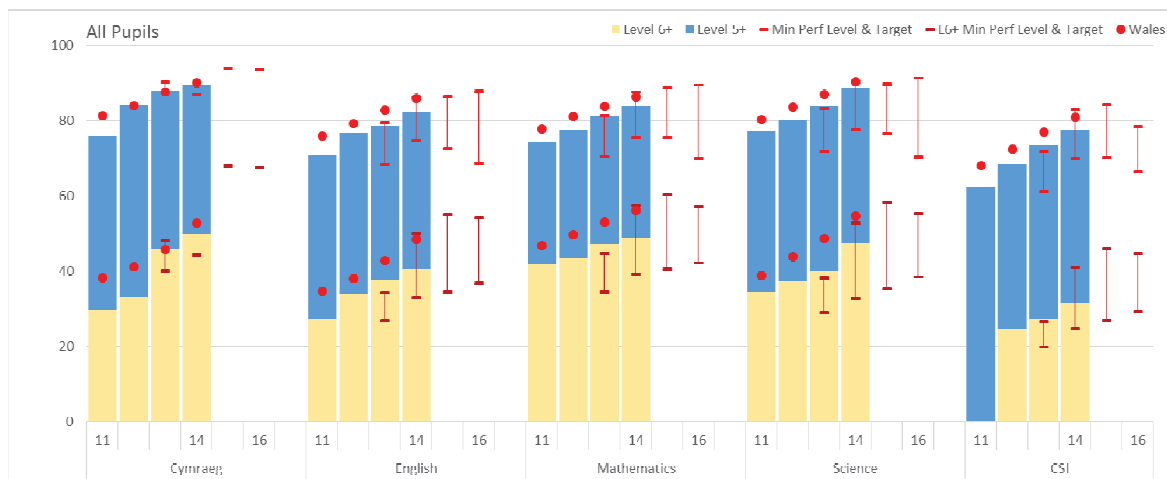
CSI			English			Welsh (first language)			Mathematics			Science		
1	Torfaen	91.2	1	Torfaen	92.4	1	Merthyr Tydfil	96.9	1	Torfaen	94.3	1	Torfaen	94.5
2	Vale of Glamorgan	90.5	2	Vale of Glamorgan	92.2	2	Vale of Glamorgan	95.9	2	Vale of Glamorgan	93.0	2	Vale of Glamorgan	94.2
3	Monmouthshire	89.5	3	Ceredigion	91.2	3	Newport	94.3	3	Ceredigion	92.3	3	Monmouthshire	93.9
4	Ceredigion	89.1	4	Monmouthshire	90.8	4	Powys	92.9	4	Monmouthshire	91.4	4	Ceredigion	93.6
5	Pembrokeshire	88.7	5	Pembrokeshire	90.7	5	Torfaen	92.0	5	Pembrokeshire	90.9	5	Pembrokeshire	93.2
6	Powys	88.3	6	Powys	90.3	6	Bridgend	90.5	6	Powys	90.3	6	Newport	92.2
7	Anglesey	87.8	7	Carmarthenshire	90.0	7	Wrexham	90.4	7	Swansea	89.8	7	Powys	92.1
8	Carmarthenshire	87.4	8	Newport	89.6	8	Cardiff	90.1	8	Carmarthenshire	89.7	8	Gwynedd	91.3
9	Swansea	87.3	9	Anglesey	89.5	9	Flintshire	90.0	9	Denbighshire	89.5	9	Carmarthenshire	91.1
10	Denbighshire	86.6	10	Denbighshire	89.2	10	Caerphilly	89.9	10	Anglesey	89.2	10	Denbighshire	90.9
11	Newport	86.2	11	Gwynedd	89.2	11	Swansea	89.5	11	Caerphilly	89.0	11	Swansea	90.8
11	Bridgend	86.2	12	Flintshire	89.0	12	Ceredigion	88.8	12	Wales	88.9	12	Anglesey	90.6
13	Flintshire	86.1	13	Swansea	88.8	13	Conwy	88.5	12	Newport	88.8	13	Caerphilly	90.4
14	Wales	86.1	14	Bridgend	88.7	14	Rhondda Cynon Taf	88.4	12	Bridgend	88.8	14	Wales	90.3
14	Gwynedd	86.0	15	Wales	88.4	15	Gwynedd	88.3	14	Gwynedd	88.6	14	Bridgend	90.3
15	Caerphilly	85.8	15	Caerphilly	88.0	15	Wales	88.1	15	Flintshire	88.4	15	Blaenau Gwent	89.6
16	Cardiff	85.1	16	Cardiff	87.3	16	Blaenau Gwent	88.0	16	Blaenau Gwent	88.4	16	Flintshire	89.4
17	Conwy	84.3	17	Conwy	87.2	17	Neath Port Talbot	87.7	17	Wrexham	87.7	17	Conwy	89.3
18	Rhondda Cynon Taf	84.3	18	Wrexham	87.2	18	Pembrokeshire	87.6	18	Cardiff	87.7	18	Cardiff	89.0
19	Wrexham	84.2	19	Rhondda Cynon Taf	86.7	19	Denbighshire	85.1	19	Conwy	87.7	19	Rhondda Cynon Taf	88.8
20	Merthyr Tydfil	84.2	20	Merthyr Tydfil	86.3	20	Carmarthenshire	84.4	20	Rhondda Cynon Taf	87.6	20	Wrexham	88.4
21	Neath Port Talbot	84.1	21	Neath Port Talbot	86.3	21	Anglesey	83.4	21	Neath Port Talbot	86.9	21	Neath Port Talbot	87.6
22	Blaenau Gwent	83.8	22	Blaenau Gwent	85.8	22	Monmouthshire	82.9	22	Merthyr Tydfil	86.2	22	Merthyr Tydfil	86.9

4.3 Key Stage 3

4.3.1 Performance continues to improve, with 77.6% pupils achieving the core subject indicator (CSI), a significant increase from 73.5% in 2013. There was also a significant increase in performance across Wales and Caerphilly is now ranked 18th in Wales.



4.3.2 Performance has improved across all indicators at the expected level 5+ and at level 6+. This bodes well for future pupil achievement at key stage 4.



4.3.3 Percentage of pupils achieving level 5+

	CSI	English	Welsh (first language)	Mathematics	Science
Caerphilly 2014	77.56 ↑	82.17 ↑	89.54/	83.93/	88.78/
Caerphilly 2014 school target range	70-83	75-86	87-87	76-88	78-90
Caerphilly 2013	73.51	78.66	88.14	81.50	83.82
Wales 2014	81.0	85.9	90.1	86.5	90.4

4.3.4 Percentage of pupils achieving level 6+

	English	Welsh (first language)	Mathematics	Science
Caerphilly 2014	40.76/	49.79/	48.80/	47.43/
Caerphilly 2013	37.48	45.76	47.16	40.08
Wales 2014	48.5	52.9	56.2	54.6

4.3.5 Percentage of pupils achieving level 7+

	English	Welsh (first language)	Mathematics	Science
Caerphilly 2014	10.73/	3.77/	18.13/	12.89/
Caerphilly 2013	10.26	4.66	17.73	11.46
Wales 2014	14.6	15.0	24.0	18.1

4.3.6 Performance in the CSI has improved by 4.05 percentage points and is ranked 18th in Wales. Performance has significantly improved by 15.18 percentage points over the last three years.

4.3.7 Performance in English at the expected level 5+ has improved by 3.51 percentage points and 11.26 over the last three years and is ranked 20th in Wales. Performance in English at the higher level 6+ has improved by 3.28 percentage points and 13.42 over the last three years. At level 7+ performance has increased by 0.47 percentage points and 5.35 over the last three years.

4.3.8 Performance in Welsh (first language) at the expected level 5+ has improved by 1.40 percentage points compared to 2013 and 13.61 over the last three years and is ranked 11th in Wales (out of 18 LAs). Performance in Welsh First Language at the higher Level 6 has improved by 4.03 percentage points and a significant 20.16 percentage points over the last 3 years. At Level 7+ performance has decreased by 0.89 percentage points and decreased by 2.25 over the last three years.

4.3.9 Performance in mathematics at the expected level 5+ has improved by 2.43 percentage points and 9.61 percentage points over the last three years and is ranked 19th in Wales. Performance in mathematics at the higher level 6+ has improved by 1.64 percentage points and 6.85 over the last three years. At level 7+, performance has improved by 0.40 and 3.74 over the last three years.

4.3.10 Performance in science at the expected level 5+ has improved by 4.96 percentage points and 11.48 over the last three years and is ranked 17th in Wales. Performance in science at the higher level 6+ has improved by 7.35 percentage points and 13.13 percentage points over the last three years. At level 7+, performance has improved by 1.43 percentage points and 4.27 over the last three years.

4.3.11 Performance at the expected Level 5+ was around the midpoint for the school target range for most the majority of indicators.

4.3.12 Gender differences at level 5+ (boys' performance – girls' performance):

	CSI		English		Welsh (first language)		Mathematics		Science	
	2013	2014	2013	2014	2013	2014	2013	2014	2013	2014
Caerphilly	-11.85	-11.92	-12.31	-11.20	-14.46	-4.56	-3.68	-7.33	-9.10	-7.93
Wales	-9.53	8.7	-11.75	-10.2	-9.93	-8.7	-4.67	-4.1	-6.13	-5.3

4.3.13 Gender differences at level 6+ (boys' performance – girls' performance):

	English		Welsh (first language)		Mathematics		Science	
	2013	2014	2013	2014	2013	2014	2013	2014
Caerphilly	-16.84	-16.15	-33.65	-27.28	-7.62	-5.09	-8.45	-9.63
Wales	-16.23		-20.46		-4.36		-9.45	

4.3.14 Gender differences at level 7+ (boys' performance – girls' performance):

	English		Welsh (first language)		Mathematics		Science	
	2013	2014	2013	2014	2013	2014	2013	2014
Caerphilly	-6.22	-8.15	-2.86	-1.31	-2.31	-1.25	-3.46	-2.56
Wales	-7.78		-9.01		-1.47		-4.22	

4.3.15 At the expected level 5+, gender differences have decreased for English, Welsh (first language) and science but have increased for mathematics. The decrease in the gender gap for Welsh (first language) is due to a decline in girls' performance.

4.3.16 At level 6+, the gender gap has increased in science but reduced in English, Welsh (first language) and mathematics.

4.3.17 The gender difference at level 7+ declined in Welsh (first language), mathematics and science. The decrease in Welsh (first language) and mathematics was due to a decline in girls' performance. The gender gap for English increased due to a decline in boys' performance.

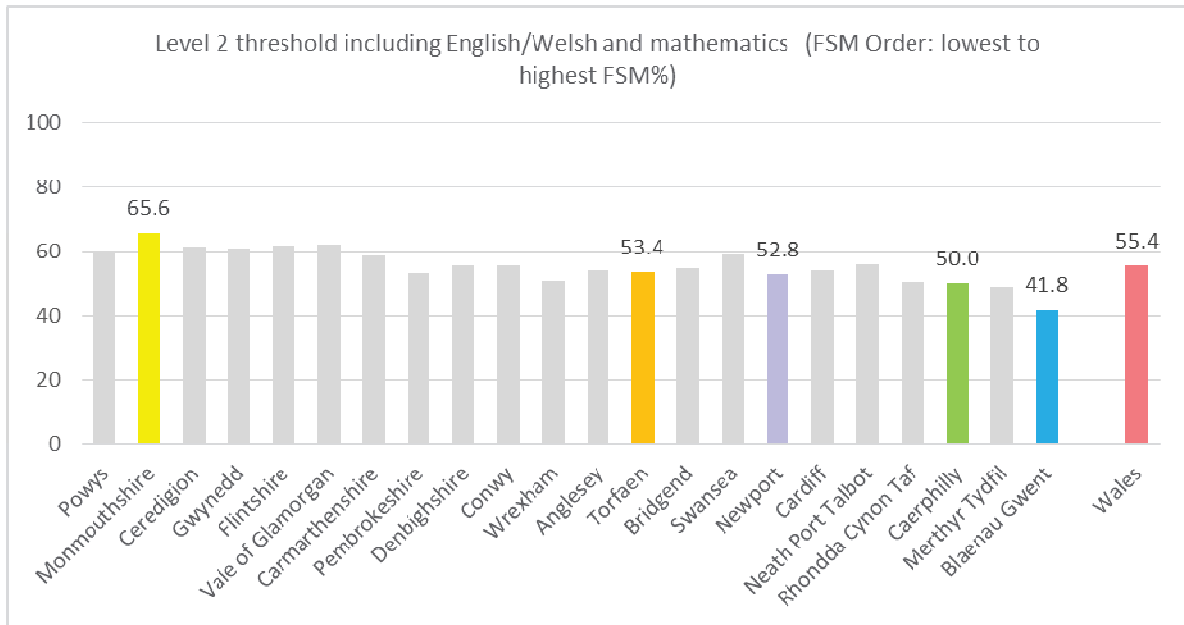
4.3.18 Wales rankings: Whilst improvements have been made in all subjects and indicators, due to a significant increase in performance across Wales, Caerphilly's rankings remain at 18th for the CSI and 20th for English, and have declined by one place for Welsh (first language) and two in mathematics. The LA ranking has improved by two places in science.

	CSI	English	Welsh (first language)	Mathematics	Science
2014	18	20	11/18 /	19 /	17 /
2013	18	20	10/18	17	19

CSI			English		Welsh (first language)		Mathematics		Science		
1	Gwynedd	89.1	1	Gwynedd	90.6	1	Pembrokeshire	95.3	1	Gwynedd	94.4
2	Ceredigion	89.0	2	Ceredigion	90.5	2	Powys	94.2	2	Ceredigion	93.9
3	Powys	86.5	3	Powys	90.3	3	Cardiff	94.0	3	Powys	89.8
4	Carmarthenshire	84.5	4	Flintshire	89.4	4	Conwy	92.0	4	Conwy	89.1
5	Flintshire	84.3	5	Monmouthshire	89.2	5	Wrexham	91.7	5	Vale of Glamorgan	89.0
6	Monmouthshire	84.2	6	Vale of Glamorgan	88.7	6	Gwynedd	91.6	6	Denbighshire	88.8
7	Vale of Glamorgan	84.0	7	Conwy	88.7	7	Denbighshire	91.6	7	Flintshire	88.7
8	Conwy	83.7	8	Carmarthenshire	88.5	8	Wales	90.1	8	Carmarthenshire	88.4
9	Anglesey	83.6	9	Denbighshire	88.5	9	Rhondda Cynon Taf	90.0	9	Monmouthshire	87.7
10	Denbighshire	83.2	10	Torfaen	88.1	10	Swansea	89.9	10	Cardiff	87.7
11	Torfaen	82.4	11	Anglesey	87.9	11	Ceredigion	89.8	11	Torfaen	87.7
12	Cardiff	81.5	12	Cardiff	86.0	12	Caerphilly	89.5	12	Pembrokeshire	87.4
13	Pembrokeshire	81.1	13	Wales	85.9	13	Anglesey	89.2	13	Anglesey	87.1
14	Swansea	80.6	14	Pembrokeshire	85.8	14	Bridgend	89.1	14	Swansea	86.9
15	Bridgend	79.3	15	Swansea	85.1	15	Carmarthenshire	88.7	15	Wales	86.5
16	Wrexham	78.4	16	Bridgend	85.1	16	Vale of Glamorgan	88.3	16	Wrexham	84.7
17	Rhondda Cynon Taf	78.4	17	Wrexham	84.6	17	Torfaen	87.4	17	Bridgend	84.5
18	Caerphilly	77.6	18	Newport	83.7	18	Neath Port Talbot	86.0	18	Rhondda Cynon Taf	84.3
19	Newport	77.1	19	Rhondda Cynon Taf	83.3	19	Flintshire	56.0	19	Caerphilly	83.9
20	Blaenau Gwent	76.4	20	Blaenau Gwent	82.7	20			20	Caerphilly	82.2
21	Merthyr Tydfil	75.1	21	Caerphilly	82.2	21			21	Merthyr Tydfil	81.0
22	Neath Port Talbot	73.1	22	Merthyr Tydfil	81.0	22			22	Merthyr Tydfil	85.0
				Neath Port Talbot	80.6					Neath Port Talbot	84.3

4.4 Key Stage 4

4.4.1 Key stage 4 results indicate continued progress in 2014 with increases in all indicators. The proportion of pupils achieving the Level 2 threshold inclusive of English/Welsh first language and mathematics has improved from 46.3% in 2013 to 50.0% in 2014. This places Caerphilly 20th in Wales for this indicator.



4.4.2 This increase is supported by increases in the Level 1 and 2 thresholds overall, the CSI, Capped Points Score and in English, Welsh (first language) mathematics and science.



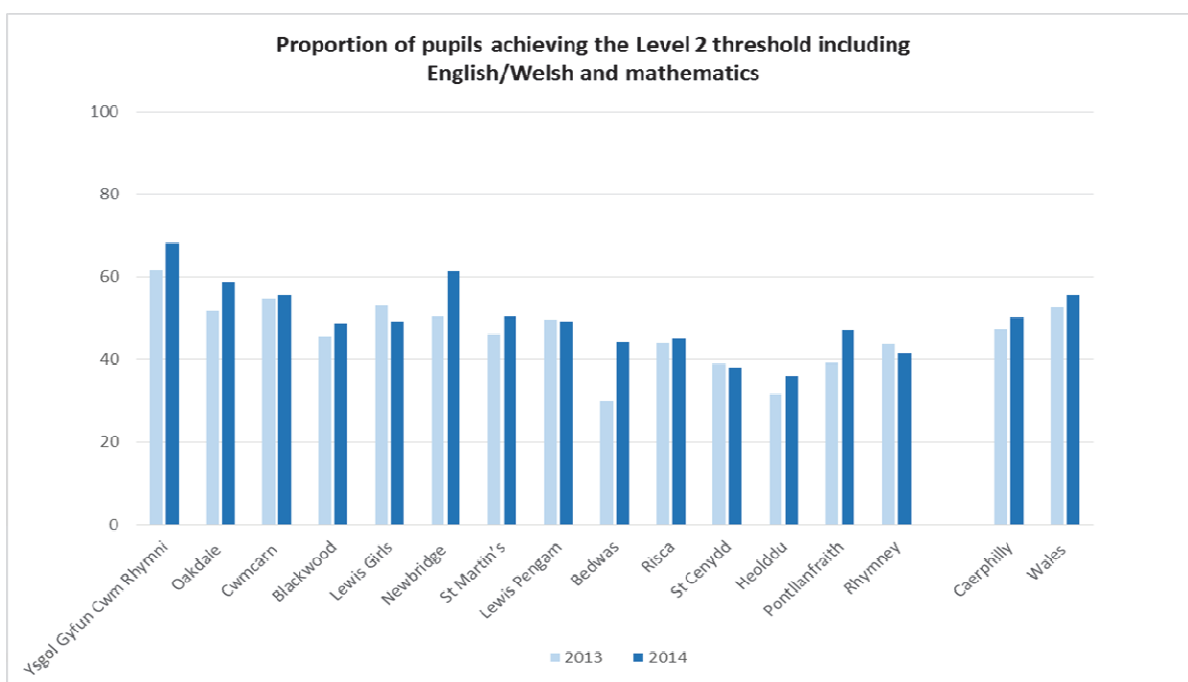
4.4.3 Despite improvements in all indicators with improvements at a greater rate than the national average in the majority of indicators, Caerphilly's rankings compared with other LAs across Wales remain broadly similar to 2013. This is due to accelerated improvements at key stage 4 in many LAs across Wales. Caerphilly's rankings have improved by one position for the Level 1 threshold and the CSI, but declined by one position in Mathematics.

	L2 inclusive	L2	L1	CSI	Capped Point Score	English	Welsh (1 st lang)	Maths	Science
2014	20	21	16 ↑	19 ↑	21	20	8/18	19 ↓	16
2013	20	21	17	20	21	20	17/18	18	16

Level 2 threshold including first lang and maths			Level 2		Level 1		CSI		Capped Point Score					
1	Monmouthshire	65.6	1	Neath Port Talbot	89.4	1	Gwynedd	97.2	1	Monmouthshire	60.9	1	Gwynedd	362
2	Vale of Glamorgan	62.2	2	Denbighshire	88.8	2	Ceredigion	97.1	2	Gwynedd	60.5	2	Ceredigion	360
3	Flintshire	61.9	3	Ceredigion	88.1	3	Neath Port Talbot	96.6	3	Vale of Glamorgan	60.1	3	Anglesey	357
4	Ceredigion	61.4	4	Gwynedd	87.7	4	Powys	96.4	4	Ceredigion	59.8	4	Carmarthenshire	352
5	Gwynedd	61.1	5	Monmouthshire	87.4	5	Monmouthshire	96.4	5	Flintshire	58.3	5	Denbighshire	352
6	Powys	59.6	6	Vale of Glamorgan	87.0	6	Anglesey	96.0	6	Powys	56.2	6	Powys	352
7	Swansea	59.1	7	Powys	86.5	7	Carmarthenshire	95.7	7	Carmarthenshire	56.1	7	Neath Port Talbot	351
8	Carmarthenshire	58.7	8	Conwy	85.8	8	Conwy	95.6	8	Swansea	56.0	8	Monmouthshire	351
9	Neath Port Talbot	55.8	9	Anglesey	85.6	9	Swansea	95.5	9	Bridgend	54.5	9	Vale of Glamorgan	350
10	Denbighshire	55.6	10	Swansea	85.4	10	Merthyr Tydfil	95.4	10	Denbighshire	54.0	10	Swansea	350
11	Conwy	55.5	11	Carmarthenshire	84.7	11	Denbighshire	95.2	11	Neath Port Talbot	53.7	11	Conwy	346
12	Wales	55.4	12	Rhondda Cynon Taf	84.6	12	Torfaen	95.2	12	Conwy	52.7	12	Pembrokeshire	344
13	Bridgend	54.8	13	Newport	83.6	13	Pembrokeshire	94.8	13	Wales	52.6	13	Flintshire	341
14	Cardiff	54.0	14	Pembrokeshire	83.1	14	Flintshire	94.1	14	Anglesey	52.5	14	Wales	341
15	Anglesey	53.8	15	Flintshire	82.7	15	Wales	94.0	15	Torfaen	52.2	15	Merthyr Tydfil	340
16	Pembrokeshire	53.2	16	Torfaen	82.3	16	Vale of Glamorgan	94.0	16	Newport	51.4	16	Newport	340
17	Newport	52.8	17	Merthyr Tydfil	82.0	17	Caerphilly	93.6	17	Cardiff	51.2	17	Torfaen	338
18	Wrexham	51.0	18	Bridgend	79.6	18	Bridgend	93.4	18	Pembrokeshire	49.7	18	Rhondda Cynon Taf	336
19	Rhondda Cynon Taf	50.5	19	Cardiff	76.0	19	Cardiff	93.2	19	Rhondda Cynon Taf	48.7	19	Bridgend	334
20	Caerphilly	50.0	20	Caerphilly	74.1	20	Rhondda Cynon Taf	93.2	20	Wrexham	47.8	20	Cardiff	331
21	Merthyr Tydfil	48.9	21	Wrexham	73.9	21	Wrexham	93.1	21	Merthyr Tydfil	46.7	21	Wrexham	329
22	Blaenau Gwent	41.8	22	Blaenau Gwent	73.3	22	Blaenau Gwent	90.0	22	Blaenau Gwent	38.6	22	Caerphilly	326
														316

English A*-C			Mathematics A*-C			Science Level 2		
1	Monmouthshire	75.8	1	Monmouthshire	70.8	1	Gwynedd	93.8
2	Flintshire	73.3	2	Flintshire	68.4	2	Torfaen	91.4
3	Ceredigion	72.7	3	Ceredigion	68.0	3	Bridgend	89.4
4	Vale of Glamorgan	70.9	4	Vale of Glamorgan	68.0	4	Anglesey	88.2
5	Powys	69.7	5	Powys	67.1	5	Denbighshire	88.2
6	Carmarthenshire	69.3	6	Swansea	65.4	6	Vale of Glamorgan	87.4
7	Gwynedd	69.2	7	Gwynedd	65.2	7	Newport	86.5
8	Newport	69.2	8	Carmarthenshire	64.1	8	Rhondda Cynon Taf	85.5
9	Swansea	67.2	9	Neath Port Talbot	63.8	9	Conwy	85.1
10	Denbighshire	66.6	10	Conwy	63.0	10	Neath Port Talbot	84.9
11	Bridgend	66.5	11	Denbighshire	62.8	11	Flintshire	84.0
12	Wales	66.2	12	Bridgend	62.5	12	Swansea	82.3
13	Pembrokeshire	66.0	13	Wales	61.7	13	Wales	82.3
14	Cardiff	66.0	14	Anglesey	60.2	14	Ceredigion	82.2
15	Conwy	65.6	15	Torfaen	59.7	15	Pembrokeshire	80.1
16	Anglesey	65.2	16	Cardiff	59.2	16	Powys	79.9
17	Torfaen	64.7	17	Pembrokeshire	58.9	17	Caerphilly	79.6
18	Neath Port Talbot	63.7	18	Wrexham	57.3	18	Carmarthenshire	79.6
19	Wrexham	61.8	19	Rhondda Cynon Taf	56.8	19	Merthyr Tydfil	78.9
20	Rhondda Cynon Taf	61.5	20	Caerphilly	56.5	20	Wrexham	77.8
21	Caerphilly	60.6	21	Newport	56.4	21	Cardiff	77.7
22	Merthyr Tydfil	59.3	22	Merthyr Tydfil	55.6	22	Blaenau Gwent	74.8
23	Blaenau Gwent	54.7		Blaenau Gwent	48.2		Monmouthshire	74.4

4.4.4 Improvement across Caerphilly masks variation between schools. 10 secondary schools improved performance in the Level 2 threshold inclusive of English/Welsh first language and mathematics and performance declined in 4 schools. The chart and table below present the individual schools' data in order of Free School Meal eligibility (lowest to highest).

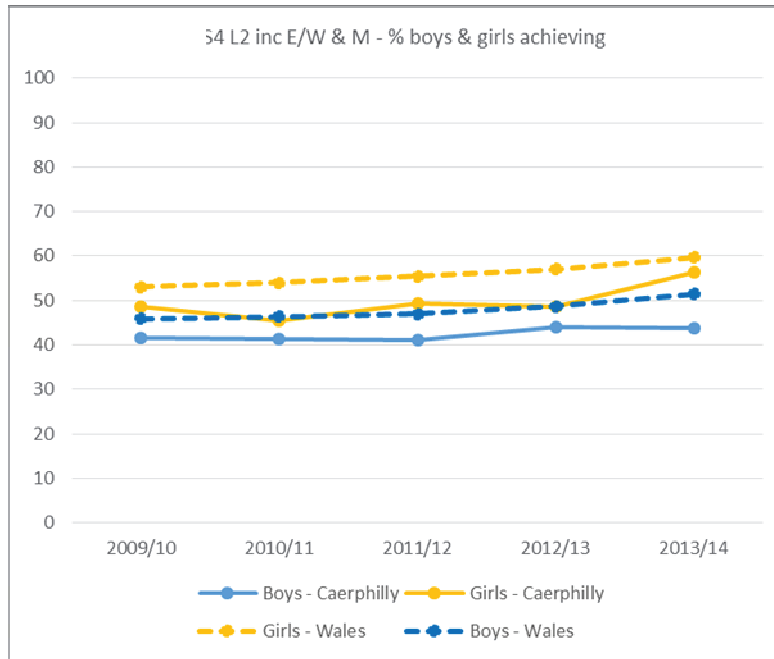


	Level 2 Threshold inc E.W & Maths (%)		CSI (%)		Level 2 (%)		Level 1 (%)		Capped Points Score	
	2013	2014	2013	2014	2013	2014	2013	2014	2013	2014
Ysgol Gyfun Cwm Rhymni	61.5	68.4	61	67.5	93	90.2	98.1	97.4	374.8	370.1
St Martin's	46.1	50.3	41.7	42.5	58.9	58.0	93.3	93.9	309.8	309.0
St Cenydd	39	37.9	33.9	34.7	60.5	71.1	91.8	93.2	309.1	319.4
Risca	43.9	45.1	42.1	35.4	72.8	80.5	97.4	97.6	329.9	339.0
Rhymney	43.7	41.5	27.9	37.7	66.5	59.1	93.7	95.0	295.2	301.1
Pontllanfraith	39.2	47.1	26.4	47.1	50.4	53.8	85.6	80.8	272.5	270.9
Oakdale	51.9	58.7	51.9	58.7	86.8	86.2	93.8	91.7	338.2	319.0
Newbridge	50.3	61.1	50.3	60.6	78.4	90.0	95.3	96.7	337.7	363.3
Lewis Pengam	49.5	49.0	48.4	47.7	81.9	88.7	90.7	93.4	329.2	332.8
Lewis Girls	53.2	49.0	51.5	49.0	71.7	81.0	93.1	96.1	340.4	350.2
Heolddu	31.5	35.9	31.5	35.9	60.5	66.9	90.3	95.1	297.4	313.8
Cwmcarn	54.6	55.4	47.2	54.7	72.4	71.2	95.7	98.6	324.1	322.8
Blackwood	45.7	48.8	45.2	48.3	57.9	68.2	91.9	96.5	310.2	332.5
Bedwas	29.9	44.1	27.9	38.1	52.4	69.5	85.7	81.4	279	296.5
Caerphilly	47.2	50.0	42.6	47.8	69.1	74.1	92.4	93.6	319	326.3
Wales	52.7	55.4	49.2	52.6	77.8	82.3	93.2	94.00	333	340.8

	English (A*-C %)		Cymraeg (A*-C %)		Mathematics (A*-C %)		Science (Level 2 %)	
	2013	2014	2013	2014	2013	2014	2013	2014
Ysgol Gyfun Cwm Rhymni	72.8	75.21	67.5	73.33	68.1	73.50	92.5	94.44
St Martin's	51.1	59.12			62.8	57.46	50	74.03
St Cenydd	43.6	50.53			53.9	45.26	51.3	48.42
Risca	59.7	54.88			48.3	57.32	86.8	75.61
Rhymney	56.3	50.31			54.4	50.31	62	65.41
Pontllanfraith	46.4	51.92			54.4	53.85	27.2	73.08
Oakdale	58.9	62.39			62.8	72.48	86.8	91.74
Newbridge	63.2	65.00			60.2	67.22	87.1	88.89
Lewis Pengam	55	57.62			54.4	55.63	86.3	86.09
Lewis Girls	63.6	71.90			57.2	49.67	71.1	90.20
Heolddu	36.3	52.11			45.2	39.44	91.9	96.48
Cwmcarn	72.4	66.91			58.3	61.87	82.8	95.68
Blackwood	56.4	65.17			52.8	53.23	55.3	79.10
Bedwas	37.4	55.93			41.5	51.69	53.1	56.78
Caerphilly	55.7	60.6	66.8	73.3	55.7	56.5	70	79.6
Wales	62.9	66.2	73.6	73.7	60.3	61.7	74.9	82.3

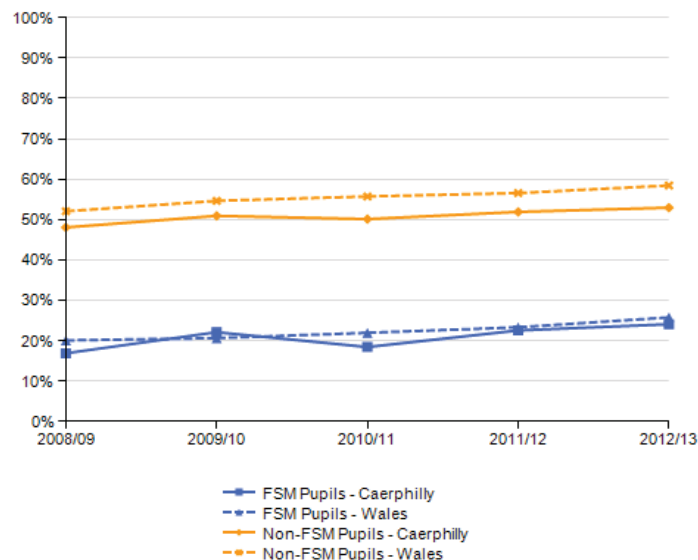
Note: The overall Caerphilly figure for Welsh first language is different to Ysgol Gyfun Cwm Rhymni's performance for 2013 as one other school entered pupils for Welsh first language examination. This school's results are not reported as the number of pupils is fewer than 5 and therefore publication of the results could lead to the identification of individual pupils' results.

4.4.5 The gender gap increased in 2014 for the Level 2 threshold inclusive of English/Welsh first language and mathematics from a 5 points gap in 2013 to a 12.6 points gap in 2014, above the Wales average of 8.3 points. This is the first time the gap has been wider than across Wales in the last five years. This gap has increased due to the significant acceleration of girls' performance and a slight decline in boys' performance. The gender gap also increased for the Level 2 threshold, Level 1 threshold, capped points score, CSI, English, mathematics and science, with gender differences for these indicators now above the Wales average.



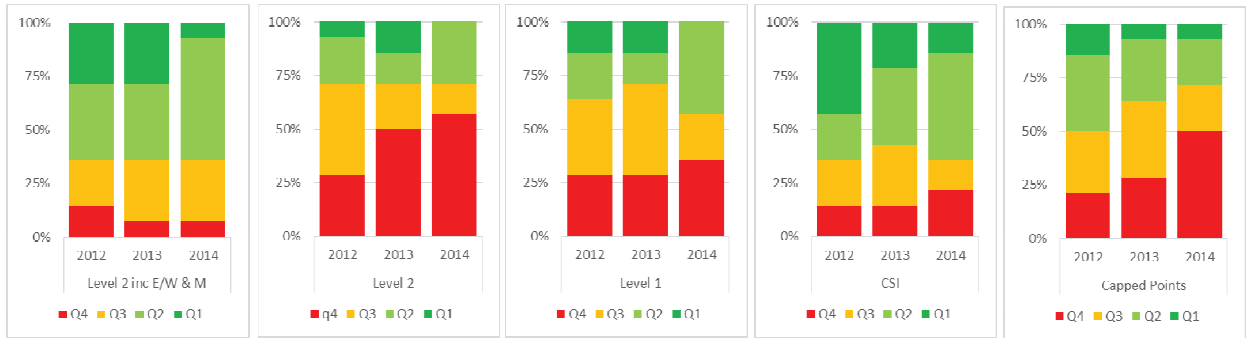
KS4 L2 inc E/W & M (% achieving)	Year				
	2009/10	2010/11	2011/12	2012/13	2013/14
Boys - Caerphilly	41.66	41.34	41.01	44.07	43.80
Boys - Wales	45.86	46.39	46.94	48.69	51.40
Girls - Caerphilly	48.68	45.47	49.33	48.64	56.40
Girls - Wales	53.06	53.99	55.45	57.03	59.70
Difference (boys%-girls%) - Caerphilly	-7.02	-4.13	-8.32	-4.57	-12.60
Difference (boys%-girls%) - Wales	-7.20	-7.60	-8.52	-8.33	-8.30

KS4 L2 inc E/W & M - % 15 year olds achieving
FSM/non FSM trend

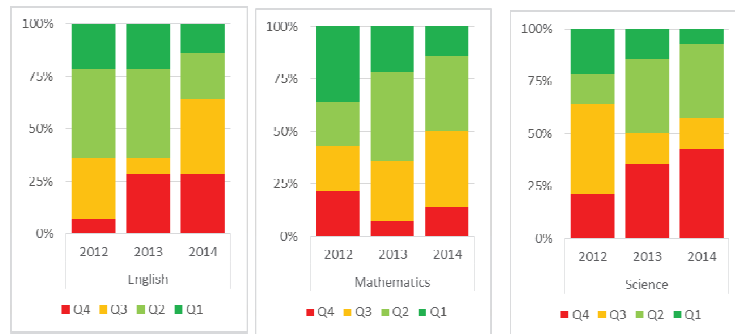


4.4.6 When FSM benchmark data is used to compare the performance of similar schools, the proportion of schools above the median remained above average for the Level 2 threshold including English/Welsh and mathematics at 65% and the number of schools in the bottom quarter remained below average at 2 schools (14%). However, the number in the top quarter reduced from 4 in 2013 to 1 in 2014 and the number of schools above the median for the

Level 1 and 2 thresholds, the CSI and the Capped Points Score reduced. The number in the bottom quarter increased for these indicators, as did the number in the top quarter.



4.4.7 The proportion of schools with core subject performance above the median is average for mathematics at 50%, and below average for English (36%) and science (43%). Despite improvements in raw performance, the number of schools above the median and in the first quarter declined in each of these core subjects and the number in the bottom quarter increased.



4.4.8 The LA benchmarks for performance modelled on FSM entitlement has been met or exceeded for the Level 2 threshold including English/Welsh and mathematics for the past five years. Performance has been just below the LA benchmark for the Capped Average Wider Point Score and this gap widened in 2014.

		2009	2010	2011	2012	2013	2014
Level 2 threshold including English/Welsh and maths	Actual	42	45	44	45	46	50.2
	Target	41	43	43	44	46	49.5
Average Wider Point Score 2009-10 / Capped Average Wider Point Score 2011-13	Actual	353	383	304	313	320	328
	Target	364	377	304	316	329	341

5. EQUALITIES IMPLICATIONS

5.1 There is no specific equalities impact in relation to the content of this report. When performance information is discussed with schools as part of the monitoring, challenge, support and intervention programme, all Equalities and Welsh Language issues are taken into account, where relevant. Similarly the Local Authority self-evaluation considers all equalities issues, and data is also gathered on discriminatory bullying incidents each term as this can impact on attainment figures for pupils who fall under any of the protected characteristics.

6. FINANCIAL IMPLICATIONS

6.1 There are no specific financial implications.

7. PERSONNEL IMPLICATIONS

7.1 There are no personnel implications within this report.

8. CONSULTATIONS

8.1 The views of all consultees listed have been incorporated in this report. This report will also be presented to the Scrutiny Committee where Members will have the opportunity to debate and challenge the school performance figures.

9. RECOMMENDATION

9.1 Members are requested to note the content of this report and progress made.

10. REASONS FOR THE RECOMMENDATION

10.1 To keep Members informed of standards achieved by Caerphilly learners in end of foundation phase, key stage 2 and key stage 3 teacher assessment.

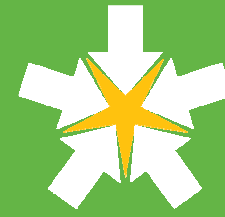
11. STATUTORY POWER

11.1 Children and Families Measure (Wales) 2010.

11.2 Local Government Measure 2009.

11.3 Education Act.

Author: Edward Pryce, Challenge Adviser (EAS)
Consultees: Cllr Rhiannon Passmore - Cabinet Member for Education and Lifelong Learning
Directorate Senior Management Team
Corporate Management Team
David Thomas, Senior Policy Officer (Equalities and Welsh Language)
HR Division
Finance Division



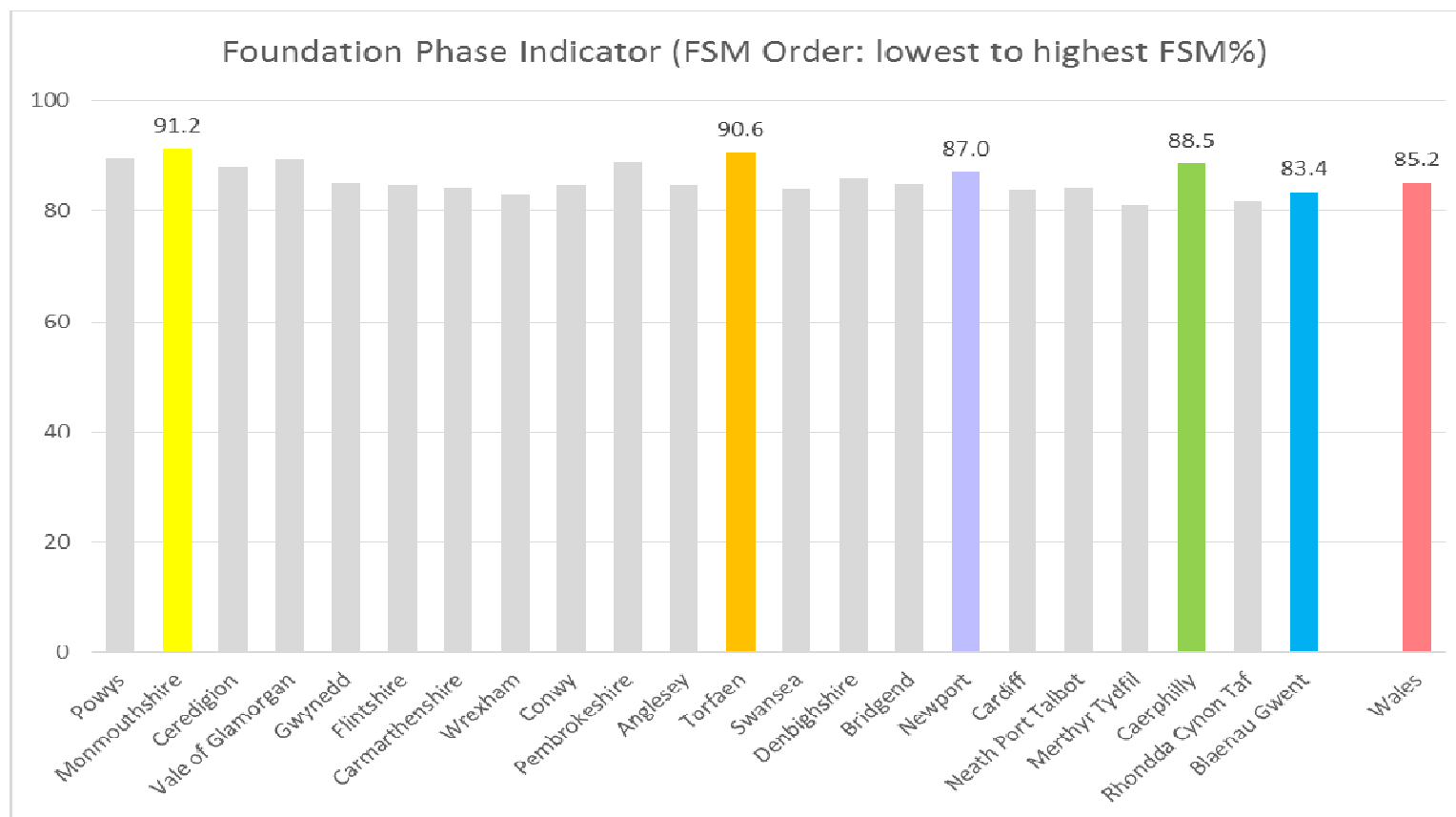
EAS

Education Achievement Service
for South East Wales
Gwasanaeth Cyflawni Addysg
i Dde Ddwyrain Cymru

Caerphilly Pupil Performance 2013/14

Foundation Phase

- Performance in the Foundation Phase continues to be above the Wales average for all indicators with 88.5% of pupils achieving the Foundation Phase indicator in 2014, an increase from 85.0% in 2013.
- Caerphilly currently ranks 6th in Wales when compared with other local authorities, which is well above Caerphilly's FSM ranking



Foundation Phase - expected Outcome 5+



- Performance improved in all indicators.
- The rate of improvement was at a faster rate than for Wales overall in all indicators except LLC-Welsh.

Outcome 5+	FPI		LLC English		LLC Welsh		Mathematical Development		PSDWCD	
	2014	2013 +/-	2014	2013 +/-	2014	2013 +/-	2014	2013 +/-	2014	2013 +/-
Caerphilly	88.3	3.5	90.1	3.2	92.3	1.6	91.1	1.7	95.4	1.6
Wales	85.2	2.2	86.6	1.4	89.9	3.1	88.7	1.3	94.2	1.2

Foundation Phase LA rankings

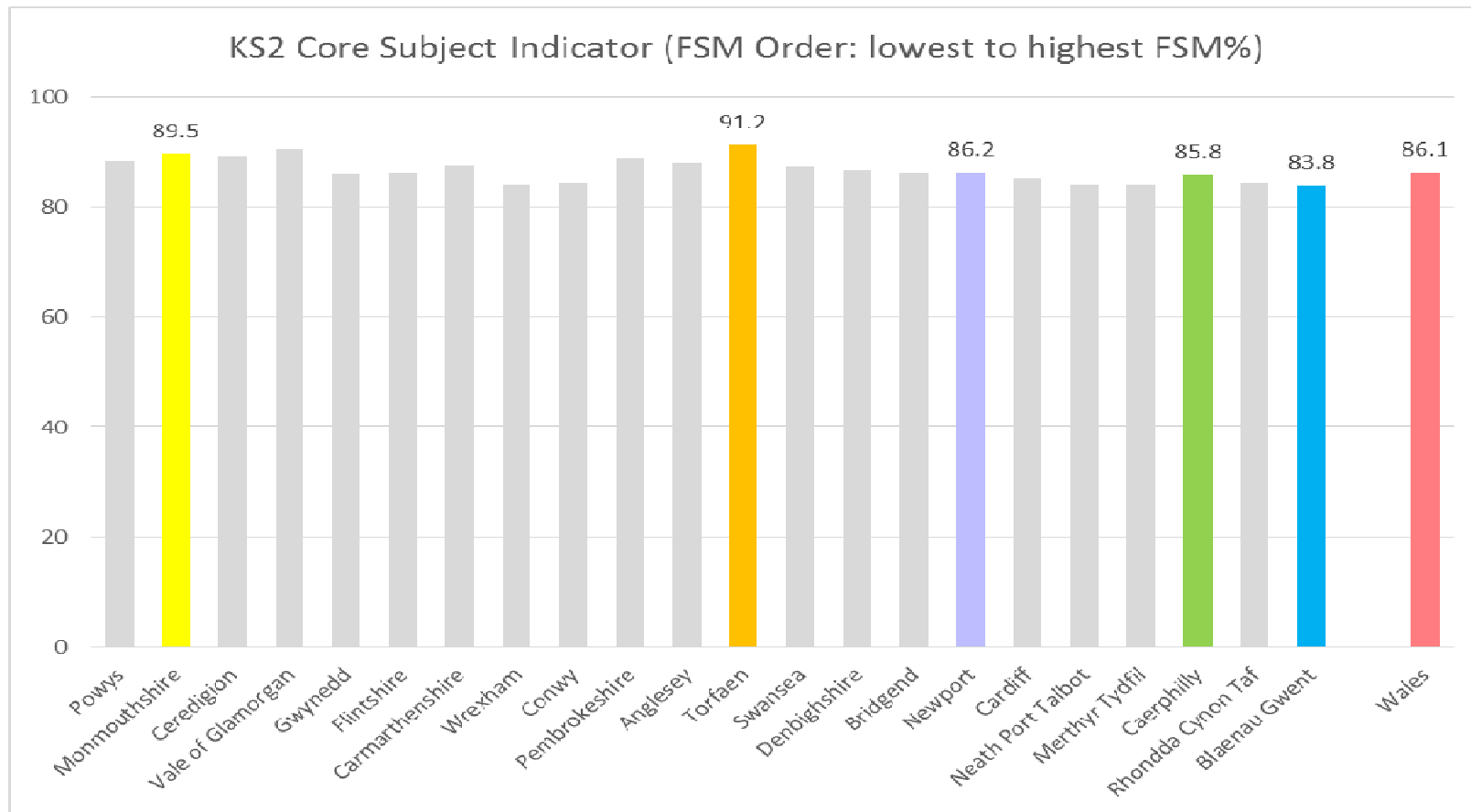
Caerphilly performance is above the Welsh average for all indicators

- FPI 6th
- LLC-English 5th
- LLC-Welsh 4th
- MD 6th
- PSDWCD 8th

FPI			LLC English			LLC Welsh			Mathematical Development			PSDWCD		
1	Monmouthshire	91.2	1	Monmouthshire	93.4	1	Vale of Glamorgan	97.1	1	Monmouthshire	93.3	1	Monmouthshire	97.2
2	Torfaen	90.6	2	Torfaen	93.0	2	Monmouthshire	96.1	2	Torfaen	93.2	2	Vale of Glamorgan	96.4
3	Powys	89.6	3	Powys	91.0	3	Merthyr Tydfil	92.5	3	Vale of Glamorgan	92.4	3	Torfaen	96.3
4	Vale of Glamorgan	89.5	4	Vale of Glamorgan	90.9	4	Caerphilly	92.3	4	Pembrokeshire	91.6	4	Powys	96.2
5	Pembrokeshire	88.7	5	Caerphilly	90.0	5	Pembrokeshire	91.8	5	Powys	91.3	5	Ceredigion	95.9
6	Caerphilly	88.5	6	Pembrokeshire	89.4	6	Neath Port Talbot	91.8	6	Caerphilly	91.1	6	Pembrokeshire	95.7
7	Ceredigion	87.9	7	Newport	89.4	7	Powys	91.6	7	Denbighshire	90.6	7	Fintshire	95.5
8	Newport	87.0	8	Ceredigion	88.1	8	Bridgend	91.4	8	Ceredigion	90.5	8	Caerphilly	95.4
9	Denbighshire	86.1	9	Denbighshire	87.4	9	Newport	91.1	9	Newport	90.0	9	Denbighshire	95.3
10	Gwynedd	85.2	10	Fintshire	87.4	10	Ceredigion	90.6	10	Gwynedd	89.7	10	Conwy	95.2
11	Wales	85.2	11	Bridgend	87.2	11	Cardiff	90.5	11	Conwy	89.7	11	Bridgend	94.4
12	Bridgend	85.1	12	Wales	86.6	12	Rhondda Cynon Taf	90.1	12	Wales	88.7	12	Anglesey	94.3
13	Anglesey	84.6	13	Anglesey	86.6	13	Wales	89.8	13	Fintshire	88.6	13	Neath Port Talbot	94.3
14	Conwy	84.5	14	Conwy	86.3	14	Gwynedd	89.4	14	Bridgend	88.3	14	Blaenau Gwent	94.3
15	Fintshire	84.5	15	Blaenau Gwent	85.8	15	Denbighshire	89.3	15	Anglesey	88.2	15	Wales	94.2
16	Neath Port Talbot	84.2	16	Wrexham	85.6	16	Carmarthenshire	89.2	16	Carmarthenshire	88.1	16	Swansea	94.1
17	Carmarthenshire	84.1	17	Swansea	85.5	17	Swansea	89.0	17	Wrexham	87.7	17	Carmarthenshire	94.0
18	Swansea	83.9	18	Cardiff	85.2	18	Torfaen	88.1	18	Neath Port Talbot	87.6	18	Newport	93.6
19	Cardiff	83.7	19	Neath Port Talbot	84.2	19	Anglesey	88.1	19	Cardiff	87.4	19	Cardiff	93.5
20	Blaenau Gwent	83.4	20	Rhondda Cynon Taf	82.9	20	Fintshire	87.3	20	Swansea	87.1	20	Gwynedd	93.4
21	Wrexham	82.9	21	Merthyr Tydfil	82.4	21	Conwy	86.3	21	Blaenau Gwent	86.5	21	Wrexham	93.2
22	Rhondda Cynon Taf	81.8	22	Carmarthenshire	81.1	22	Wrexham	85.7	22	Rhondda Cynon Taf	85.1	22	Rhondda Cynon Taf	92.0
23	Merthyr Tydfil	81.2				23	Blaenau Gwent	75.7	23	Merthyr Tydfil	85.3	23	Merthyr Tydfil	91.8

Key Stage 2

- Performance in key stage 2 continues to be higher than expected given a FSM ranking of 21st for all core subjects at level 4 and above with Caerphilly ranking remaining 15th in Wales for the CSI in 2013
- The percentage achieving the CSI remains slightly below the national average



Key Stage 2 – Expected Level 4+



- Performance improved in all indicators
- The rate of improvement was at a faster rate than for Wales overall in mathematics and science, a slightly slower rate in the CSI and English
- Performance in Welsh First Language was at a slower rate than Wales, but performance remains above the Wales average

Level 4+	CSI		Cymraeg		English		Mathematics		Science	
	2014	2013 +/-	2014	2013 +/-	2014	2013 +/-	2014	2013 +/-	2014	2013 +/-
Caerphilly	85.8	1.5	90.0	0.3	88.0	1.1	89.0	2.7	90.4	1.0
Wales	86.1	1.8	88.1	1.4	88.4	1.3	88.9	1.2	90.3	0.4

Key Stage 2

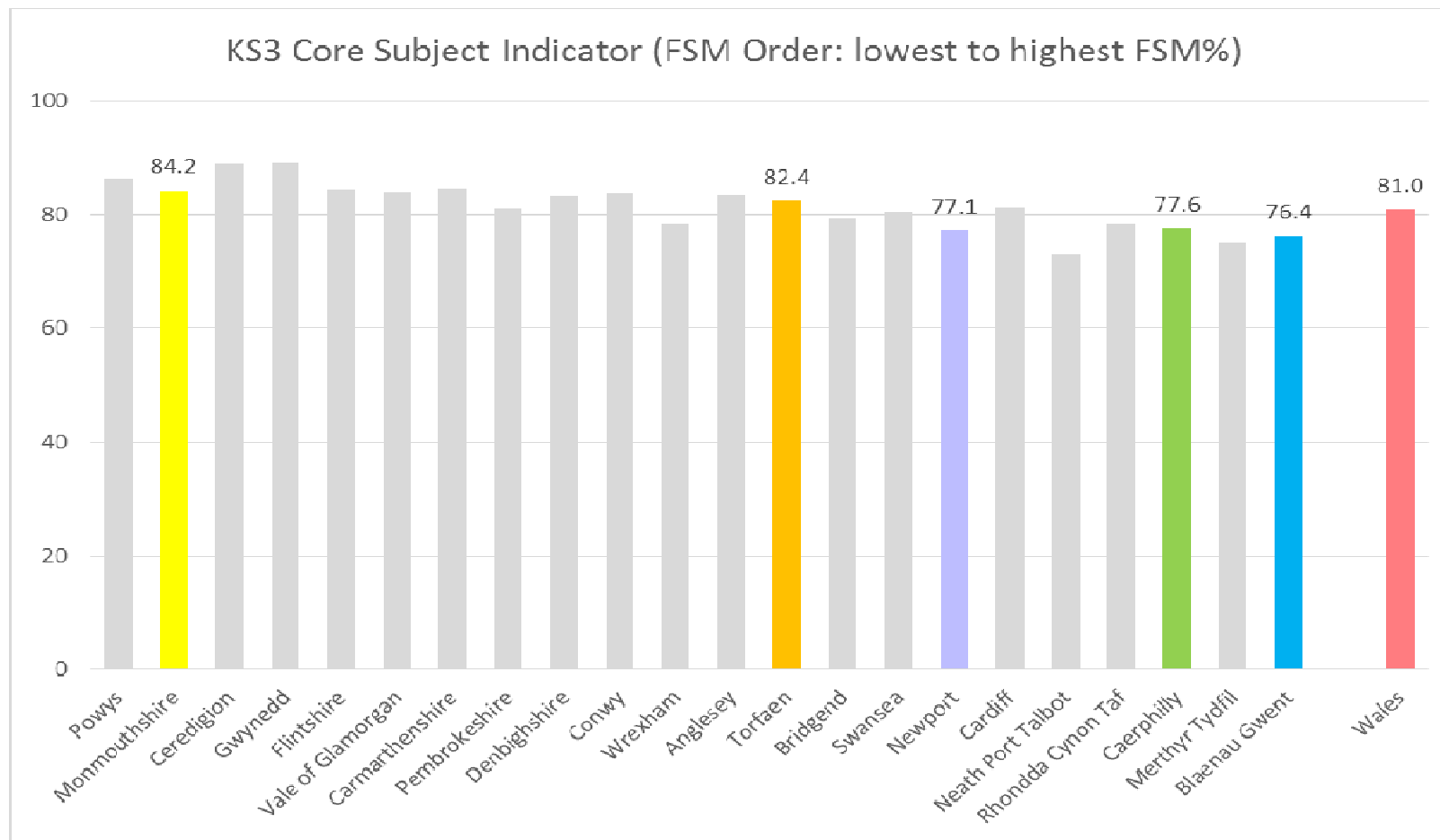
Caerphilly's performance is above the Wales average for Welsh first language and Mathematics and science, but slightly lower for English and the CSI

- CSI 15th
- English 15th
- Welsh 10th
- Maths 11th
- Science 13th

CSI			English			Welsh (first language)			Mathematics			Science		
1	Torfaen	91.2	1	Torfaen	92.4	1	Merthyr Tydfil	96.9	1	Torfaen	94.3	1	Torfaen	94.5
2	Vale of Glamorgan	90.5	2	Vale of Glamorgan	92.2	2	Vale of Glamorgan	95.9	2	Vale of Glamorgan	93.0	2	Vale of Glamorgan	94.2
3	Monmouthshire	89.5	3	Ceredigion	91.2	3	Newport	94.3	3	Ceredigion	92.3	3	Monmouthshire	93.9
4	Ceredigion	89.1	4	Monmouthshire	90.8	4	Powys	92.9	4	Monmouthshire	91.4	4	Ceredigion	93.6
5	Pembrokeshire	88.7	5	Pembrokeshire	90.7	5	Torfaen	92.0	5	Pembrokeshire	90.9	5	Pembrokeshire	93.2
6	Powys	88.3	6	Powys	90.3	6	Bridgend	90.5	6	Powys	90.3	6	Newport	92.2
7	Anglesey	87.8	7	Carmarthenshire	90.0	7	Wrexham	90.4	7	Swansea	89.8	7	Powys	92.1
8	Carmarthenshire	87.4	8	Newport	89.6	8	Cardiff	90.1	8	Carmarthenshire	89.7	8	Gwynedd	91.3
9	Swansea	87.3	9	Anglesey	89.5	9	Flintshire	90.0	9	Denbighshire	89.5	9	Carmarthenshire	91.1
10	Denbighshire	86.6	10	Denbighshire	89.2	10	Caerphilly	89.9	10	Anglesey	89.2	10	Denbighshire	90.9
11	Newport	86.2	11	Gwynedd	89.2	11	Swansea	89.5	11	Caerphilly	89.0	11	Swansea	90.8
12	Bridgend	86.2	12	Flintshire	89.0	12	Ceredigion	88.8	12	Wales	88.9	12	Anglesey	90.6
13	Flintshire	86.1	13	Swansea	88.8	13	Conwy	88.5	13	Newport	88.8	13	Caerphilly	90.4
14	Wales	86.1	14	Bridgend	88.7	14	Rhondda Cynon Taf	88.4	14	Bridgend	88.8	14	Wales	90.3
15	Gwynedd	86.0	15	Wales	88.4	15	Gwynedd	88.3	15	Gwynedd	88.6	15	Bridgend	90.3
16	Caerphilly	85.8	16	Caerphilly	88.0	16	Wales	88.1	16	Flintshire	88.4	16	Blaenau Gwent	89.6
17	Cardiff	85.1	17	Cardiff	87.3	17	Blaenau Gwent	88.0	17	Blaenau Gwent	88.4	17	Flintshire	89.4
18	Conwy	84.3	18	Conwy	87.2	18	Neath Port Talbot	87.7	18	Wrexham	87.7	18	Conwy	89.3
19	Rhondda Cynon Taf	84.3	19	Wrexham	87.2	19	Pembrokeshire	87.6	19	Cardiff	87.7	19	Cardiff	89.0
20	Wrexham	84.2	20	Rhondda Cynon Taf	86.7	20	Denbighshire	85.1	20	Conwy	87.7	20	Rhondda Cynon Taf	88.8
21	Merthyr Tydfil	84.2	21	Merthyr Tydfil	86.3	21	Carmarthenshire	84.4	21	Rhondda Cynon Taf	87.6	21	Wrexham	88.4
22	Neath Port Talbot	84.1	22	Neath Port Talbot	86.3	22	Anglesey	83.4	22	Neath Port Talbot	86.9	22	Neath Port Talbot	87.6
23	Blaenau Gwent	83.8	23	Blaenau Gwent	85.8	23	Monmouthshire	82.9	23	Merthyr Tydfil	86.2	23	Merthyr Tydfil	86.9

Key Stage 3

- Performance in key stage 3 continues to be stronger than expected in all core subjects at level 5 and above with Caerphilly ranking 18th in Wales for the CSI at 73.5% in 2013 (an improvement from 68.4% in 2012).



Key Stage 3 – Expected Level (5+)



- All core subjects improved in 2014, with the greatest improvement in English.
- The rate of improvement was faster than that of Wales as a whole in English and science, but slower in Welsh first language and mathematics

Page 27

Level 5+	CSI		Cymraeg		English		Mathematics		Science	
	2014	2013 +/-	2014	2013 +/-	2014	2013 +/-	2014	2013 +/-	2014	2013 +/-
Caerphilly	77.6	3.1	89.5	1.4	82.2	3.5	83.9	2.4	88.8	5.0
Wales	81.0	4.0	90.1	3.5	85.9	3.0	86.5	3.4	90.4	3.4

Key Stage 3

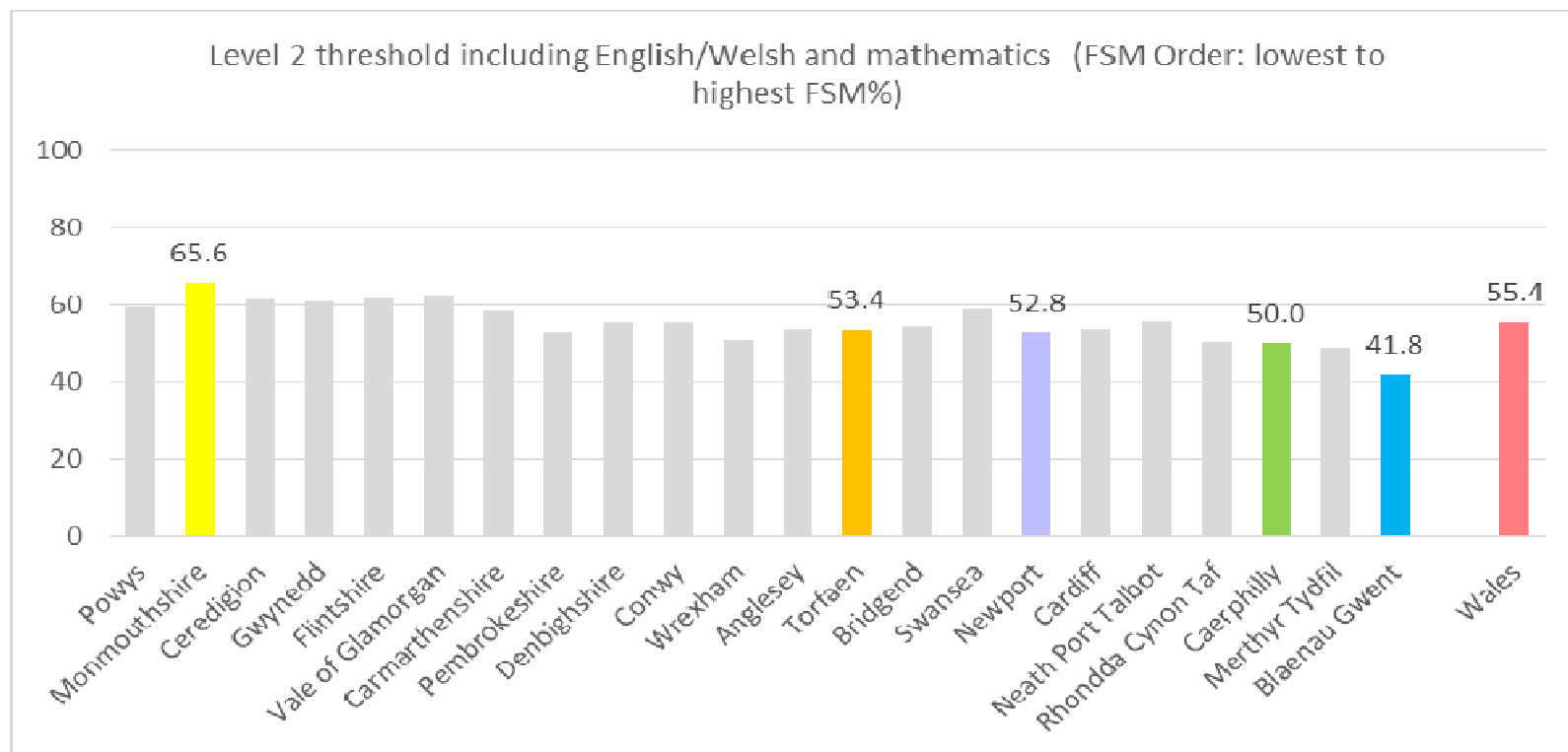
Caerphilly's performance is below the Wales average for all indicators, but the ranking positions are slightly above the expectation of 20th

- *CSI 18th,*
- *Cymraeg 11th*
- *English 20th*
- *Maths 19th*
- *Science 17th*

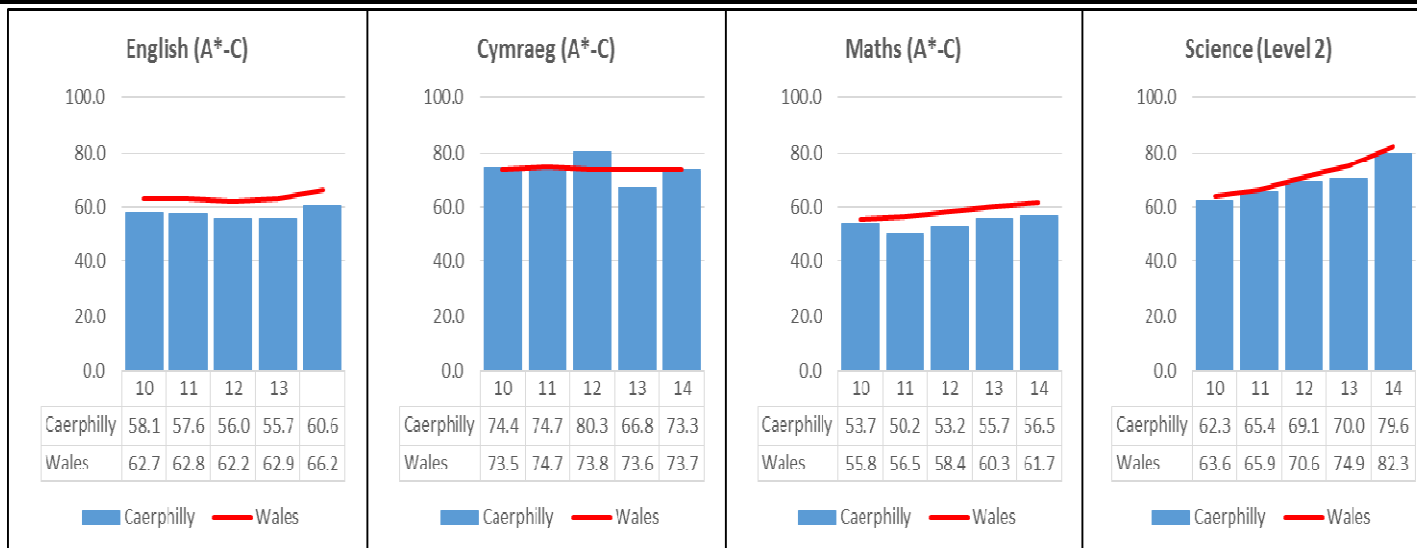
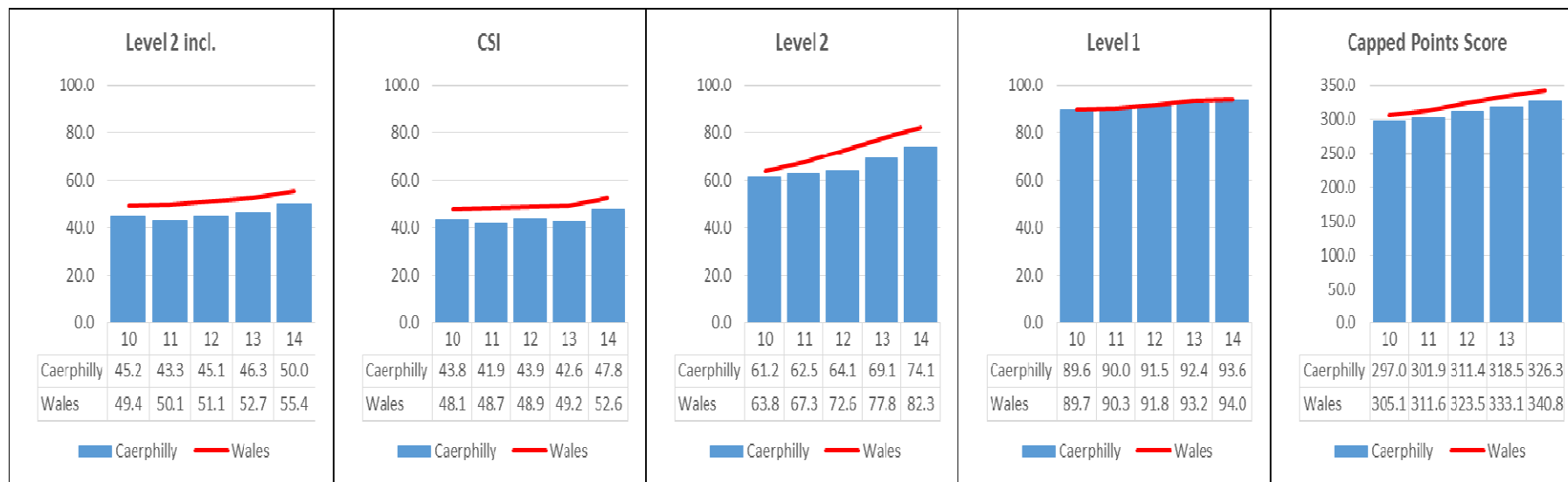
CSI		English		Welsh (first language)		Mathematics		Science			
1	Gwynedd	89.1	1	Gwynedd	90.6	1	Pembrokeshire	95.3	1	Powys	94.4
2	Ceredigion	89.0	2	Ceredigion	90.5	2	Powys	94.2	2	Ceredigion	91.5
3	Powys	86.5	3	Powys	90.3	3	Cardiff	94.0	3	Powys	89.8
4	Carmarthenshire	84.5	4	Flintshire	89.4	4	Conwy	92.0	4	Conwy	89.1
5	Flintshire	84.3	5	Monmouthshire	89.2	5	Wrexham	91.7	5	Vale of Glamorgan	89.0
6	Monmouthshire	84.2	6	Vale of Glamorgan	88.7	6	Gwynedd	91.6	6	Denbighshire	88.8
7	Vale of Glamorgan	84.0	7	Conwy	88.7	7	Denbighshire	91.6	7	Flintshire	88.7
8	Conwy	83.7	8	Carmarthenshire	88.5	8	Wales	90.1	8	Carmarthenshire	88.4
9	Anglesey	83.6	9	Denbighshire	88.5	8	Rhondda Cynon Taf	90.0	9	Monmouthshire	87.7
10	Denbighshire	83.2	10	Torfaen	88.1	9	Swansea	89.9	9	Cardiff	87.7
11	Torfaen	82.4	11	Anglesey	87.9	10	Ceredigion	89.8	9	Torfaen	87.7
12	Cardiff	81.5	12	Cardiff	86.0	11	Caerphilly	89.5	12	Pembrokeshire	87.4
13	Pembrokeshire	81.1	13	Wales	85.9	12	Anglesey	89.2	13	Anglesey	87.1
14	Swansea	80.6	14	Pembrokeshire	85.8	13	Bridgend	89.1	13	Swansea	86.9
15	Wrexham	79.3	15	Swansea	85.1	14	Carmarthenshire	88.7	14	Wales	86.5
16	Rhondda Cynon Taf	78.4	16	Bridgend	85.1	15	Vale of Glamorgan	88.3	15	Wrexham	84.7
17	Caerphilly	77.6	17	Wrexham	84.6	16	Torfaen	87.4	16	Bridgend	84.5
18	Newport	77.1	18	Rhondda Cynon Taf	83.3	17	Neath Port Talbot	86.0	17	Rhondda Cynon Taf	84.3
19	Blaenau Gwent	76.4	19	Blaenau Gwent	82.7	18	Flintshire	56.0	18	Newport	84.0
20	Merthyr Tydfil	75.1	20	Caerphilly	82.2	19	Caerphilly	83.9	19	Caerphilly	83.9
21	Neath Port Talbot	73.1	21	Merthyr Tydfil	81.0	20	Merthyr Tydfil	83.0	20	Merthyr Tydfil	83.0
22			22	Neath Port Talbot	80.6	21	Blaenau Gwent	80.5	21	Blaenau Gwent	80.5
						22	Neath Port Talbot	79.9	22	Neath Port Talbot	84.3

Key Stage 4

- Key stage 4 results indicate continued progress in 2014 with increases in all indicators
- The proportion of pupils achieving the Level 2 threshold inclusive of English/Welsh first language and mathematics has improved from 46.3% in 2013 to 50.0% in 2014. This places Caerphilly 20th in Wales for this indicator.



Key Stage 4 – All indicators (5 years)



Key Stage 4 Indicators

Caerphilly's performance is below the Wales average for all indicators, but the ranking positions are slightly in line with expectation of 20th

Page 31

- L2+ 20th
- L2 20th
- L1 16th
- CSI 19th
- CPS 21st

Level 2 threshold and highest and maths			Level 2		Level 1		CSI		Capped Point Score					
1	Monmouthshire	65.6	1	Neath Port Talbot	89.4	1	Gwynedd	97.2	1	Monmouthshire	60.9	1	Gwynedd	382
2	Vale of Glamorgan	62.2	2	Denbighshire	88.8	2	Ceredigion	97.1	2	Gwynedd	63.8	2	Ceredigion	380
3	Flintshire	61.9	3	Ceredigion	88.7	3	Neath Port Talbot	96.8	3	Vale of Glamorgan	63.1	3	Anglesey	380
4	Ceredigion	61.4	4	Gwynedd	87.7	4	Powys	96.4	4	Ceredigion	62.8	4	Denbighshire	380
5	Gwynedd	61.1	5	Monmouthshire	87.4	5	Monmouthshire	96.4	5	Flintshire	62.8	5	Denbighshire	380
6	Powys	59.8	6	Vale of Glamorgan	87.0	6	Anglesey	96.0	6	Powys	62.2	6	Powys	380
7	Swansea	59.7	7	Powys	86.8	7	Cardiffshire	95.7	7	Cardiffshire	62.1	7	Neath Port Talbot	380
8	Cardiffshire	58.7	8	Conwy	86.8	8	Conwy	95.8	8	Swansea	62.0	8	Monmouthshire	351
9	Neath Port Talbot	58.6	9	Anglesey	86.8	9	Swansea	95.8	9	Brockton	61.8	9	Vale of Glamorgan	380
10	Denbighshire	58.6	10	Swansea	86.4	10	Merthyr Tydfil	95.4	10	Denbighshire	61.0	10	Swansea	380
11	Conwy	58.6	11	Cardiffshire	84.7	11	Denbighshire	95.2	11	Neath Port Talbot	60.7	11	Conwy	348
	Wales	55.4	12	Rhondda Cynon Taf	84.8	12	Torfaen	95.2	12	Conwy	60.7	12	Merthyr Tydfil	344
12	Brockton	54.8	13	Newport	83.6	13	Pembrokeshire	94.8	13	Wales	52.6	13	Flintshire	341
13	Cardiff	54.0	14	Pembrokeshire	83.7	14	Flintshire	94.1	14	Torfaen	52.2	14	Wales	341
14	Anglesey	53.8	15	Wales	82.3	15	Vale of Glamorgan	94.0	15	Newport	51.4	15	Newport	340
15	Torfaen	53.4	16	Torfaen	82.3	16	Caerphilly	93.6	16	Cardiff	51.2	16	Torfaen	338
16	Pembrokeshire	53.2	17	Merthyr Tydfil	82.0	17	Brockton	93.4	17	Pembrokeshire	49.7	17	Rhondda Cynon Taf	338
17	Newport	52.8	18	Brockton	79.8	18	Newport	93.4	18	Rhondda Cynon Taf	48.7	18	Brockton	334
18	Aberystwyth	51.0	19	Cardiff	78.0	19	Cardiff	93.2	19	Caerphilly	47.8	19	Cardiff	331
19	Rhondda Cynon Taf	50.8	20	Caerphilly	74.1	20	Rhondda Cynon Taf	93.2	20	Aberystwyth	47.8	20	Aberystwyth	329
20	Caerphilly	50.0	21	Aberystwyth	73.9	21	Aberystwyth	93.1	21	Merthyr Tydfil	46.7	21	Caerphilly	326
21	Merthyr Tydfil	46.9	22	Blaenau Gwent	73.3	22	Blaenau Gwent	90.0	22	Blaenau Gwent	38.6	22	Blaenau Gwent	316

Key Stage 4 Core Subjects

Caerphilly's performance is below the Wales average for all indicators, but the ranking positions are in line with or above expectation of 20th

- *English 20th*
- *Maths 19th*
- *Science 16th*

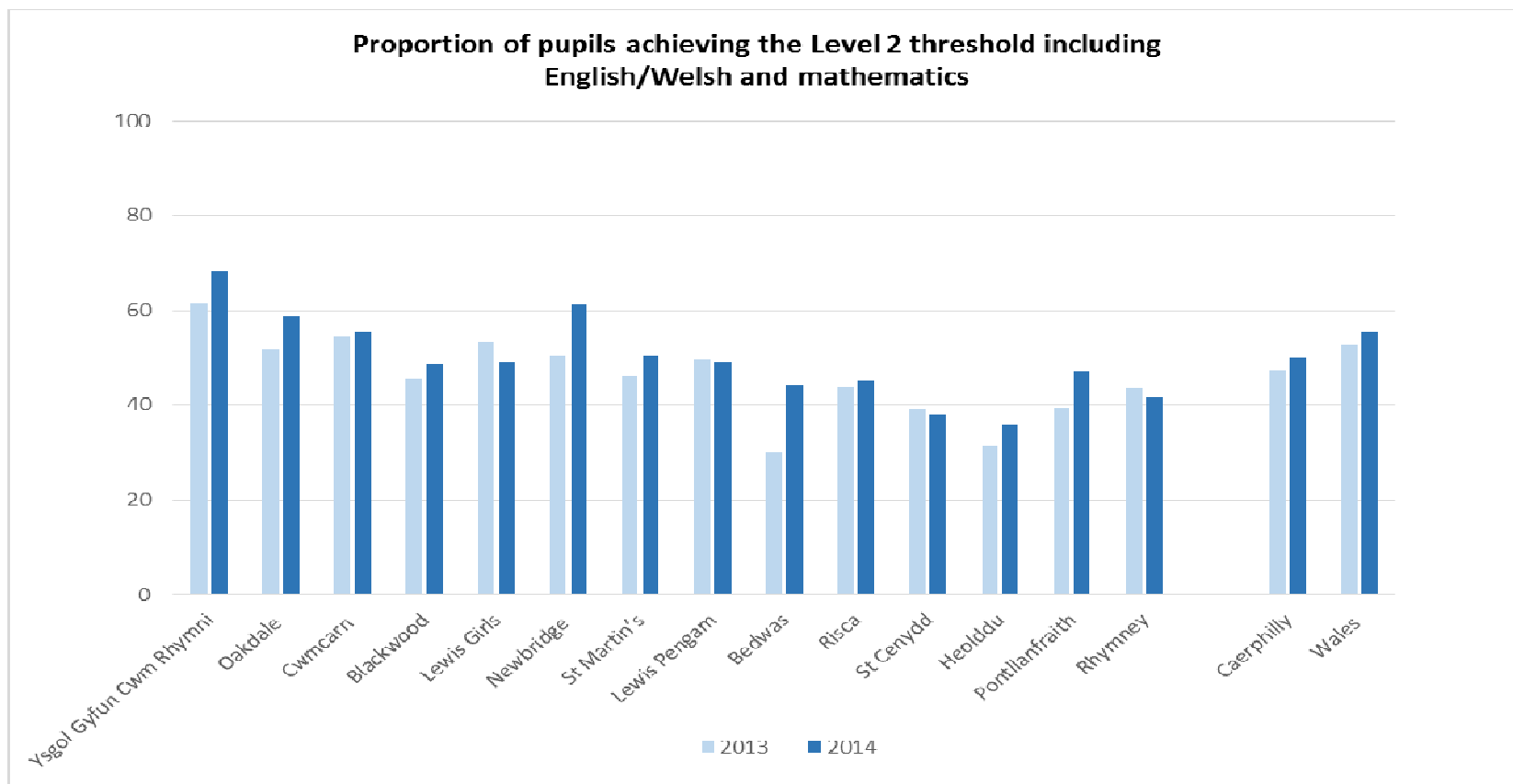
English A* G		
1	Monmouthshire	75.8
2	Fynfforde	70.3
3	Ceredigion	70.7
4	Wale of Glamorgan	70.9
5	Howell	69
6	Cardiffshire	69.3
7	Gwynedd	69.2
8	Newport	69.2
9	Swansea	67.2
10	Denbighshire	66.6
11	Bridgend	66.6
12	Wales	66.2
13	Perthshire	66.0
14	Cardiff	66.0
15	Conwy	65.6
16	Anglesey	65.2
17	Torfaen	64.7
18	Neath Port Talbot	63.7
19	Llwyn	63.6
20	Rhondda Cynon Taf	63.6
21	Merthyr Tydfil	63.3
22	Blaenau Gwent	61.7

Mathematics A* G		
1	Monmouthshire	70.8
2	Fynfforde	68.1
3	Ceredigion	68.0
4	Wale of Glamorgan	68.0
5	Howell	67.1
6	Swansea	66.1
7	Gwynedd	66.0
8	Cardiffshire	64.1
9	Neath Port Talbot	63.6
10	Conwy	63.0
11	Denbighshire	62.6
12	Bridgend	62.6
13	Wales	61.7
14	Torfaen	59.7
15	Cardiff	59.2
16	Perthshire	58.9
17	Llwyn	57.3
18	Rhondda Cynon Taf	56.6
19	Caerphilly	56.5
20	Newport	56.4
21	Merthyr Tydfil	55.6
22	Blaenau Gwent	48.2

Science Level 2		
1	Gwynedd	93.6
2	Torfaen	91.4
3	Bridgend	89.1
4	Anglesey	88.2
5	Denbighshire	88.2
6	Wale of Glamorgan	87.1
7	Newport	86.5
8	Rhondda Cynon Taf	86.4
9	Conwy	86.1
10	Neath Port Talbot	84.9
11	Fynfforde	84.0
12	Swansea	82.0
13	Wales	82.0
14	Ceredigion	82.0
15	Perthshire	80.1
16	Howell	79.9
17	Caerphilly	79.6
18	Merthyr Tydfil	78.9
19	Llwyn	77.6
20	Cardiff	77.1
21	Blaenau Gwent	74.8
22	Monmouthshire	74.4

Key Stage 4 – Individual Schools

- Improvement across Caerphilly masks variation between schools
- 10 secondary schools improved performance in the Level 2 threshold inclusive of English/Welsh first language and mathematics, but performance declined in 4 schools.



Key Stage 4 - Individual School Performance



	Level 2 Threshold inc E.W & Maths (%)		CSI (%)		Level 2 (%)		Level 1 (%)		Capped Points Score	
	2013	2014	2013	2014	2013	2014	2013	2014	2013	2014
Ysgol Gyfun Cwm Rhymni	61.5	68.4	61	67.5	93	90.2	98.1	97.4	374.8	370.1
St Martin's	46.1	50.3	41.7	42.5	58.9	58.0	93.3	93.9	309.8	309.0
St Cenydd	39	37.9	33.9	34.7	60.5	71.1	91.8	93.2	309.1	319.4
Risca	43.9	45.1	42.1	35.4	72.8	80.5	97.4	97.6	329.9	339.0
Rhymney	43.7	41.5	27.9	37.7	66.5	59.1	93.7	95.0	295.2	301.1
Pontllanfraith	39.2	47.1	26.4	47.1	50.4	53.8	85.6	80.8	272.5	270.9
Oakdale	51.9	58.7	51.9	58.7	86.8	86.2	93.8	91.7	338.2	319.0
Newbridge	50.3	61.1	50.3	60.6	78.4	90.0	95.3	96.7	337.7	363.3
Lewis Pengam	49.5	49.0	48.4	47.7	81.9	88.7	90.7	93.4	329.2	332.8
Lewis Girls	53.2	49.0	51.5	49.0	71.7	81.0	93.1	96.1	340.4	350.2
Heolddu	31.5	35.9	31.5	35.9	60.5	66.9	90.3	95.1	297.4	313.8
Cwmcarn	54.6	55.4	47.2	54.7	72.4	71.2	95.7	98.6	324.1	322.8
Blackwood	45.7	48.8	45.2	48.3	57.9	68.2	91.9	96.5	310.2	332.5
Bedwas	29.9	44.1	27.9	38.1	52.4	69.5	85.7	81.4	279	296.5
Caerphilly	47.2	50.0	42.6	47.8	69.1	74.1	92.4	93.6	319	326.3
Wales	52.7	55.4	49.2	52.6	77.8	82.3	93.2	94.00	333	340.8

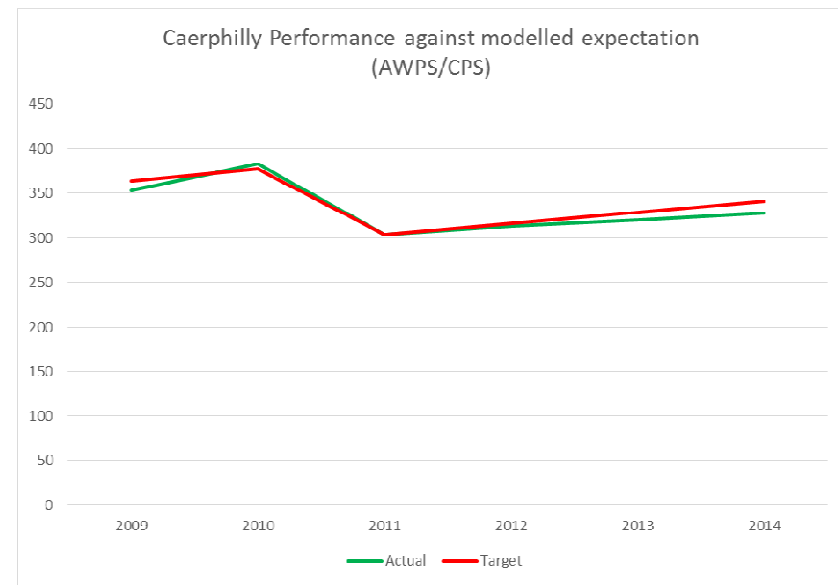
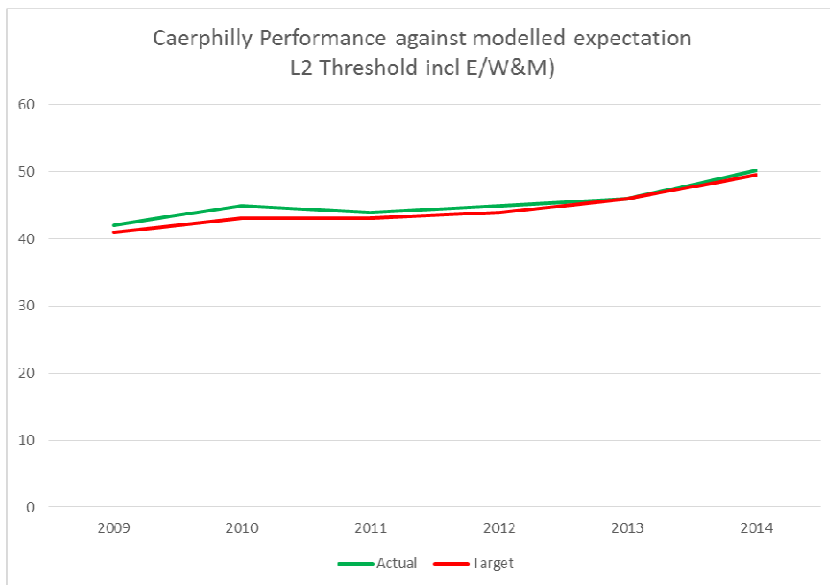
Key Stage 4 – Benchmark Summary



Key Stage 4 – Against Modelled Expectation



		2009	2010	2011	2012	2013	2014
Level 2 threshold including English/Welsh and maths	Actual	42	45	44	45	46	50.2
	Target	41	43	43	44	46	49.5
Average Wider Point Score (AWPS) up to 2009-10 / Capped Average Wider Point Score (CPS) 2011-14	Actual	353	383	304	313	320	328
	Target	364	377	304	316	329	341



L2 Threshold Including E/W&M – LA Comparison



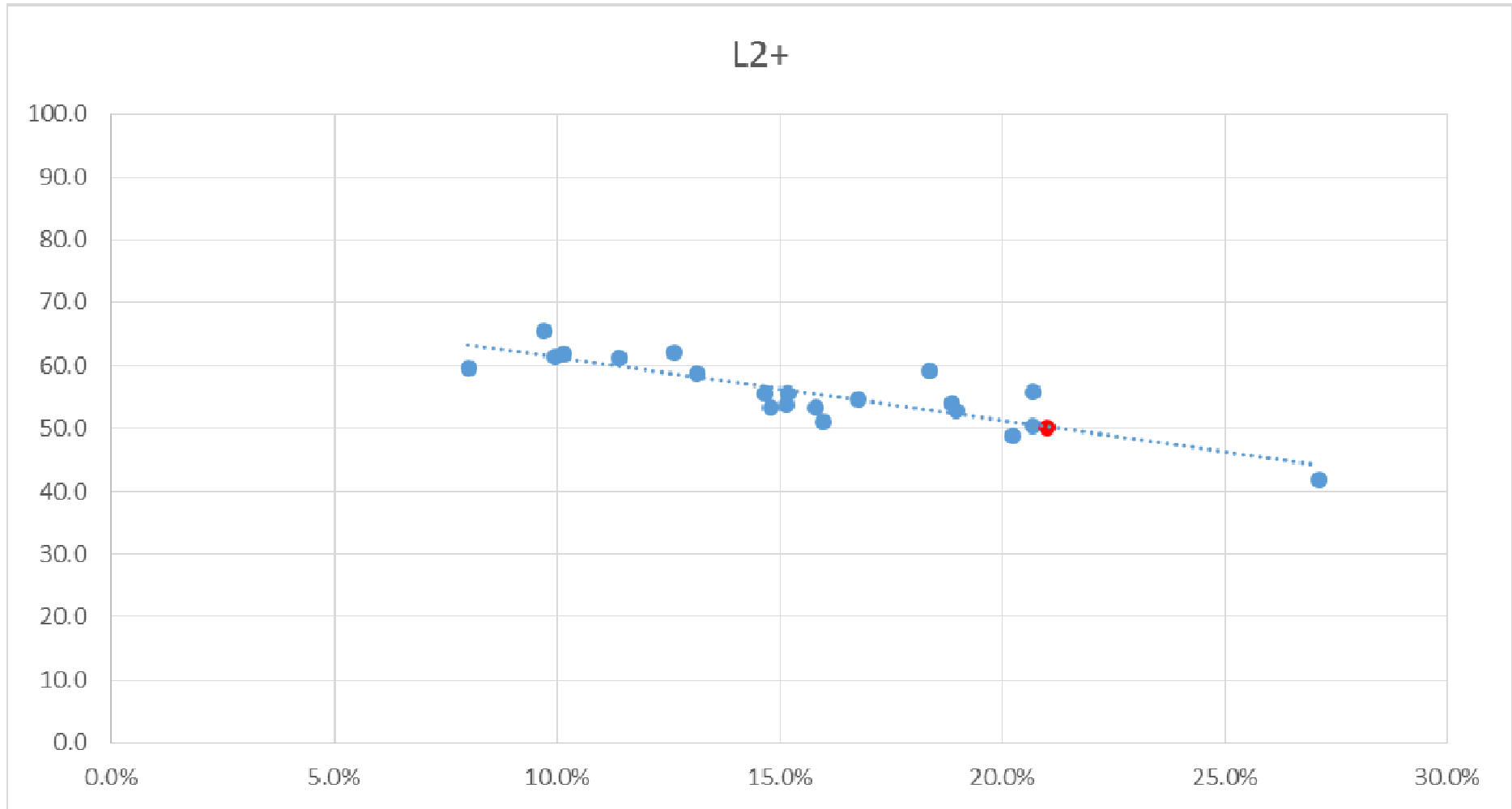
Rank	LA	FSM	L2+
1	Monmouthshire	9.7%	65.6
2	Vale of Glamorgan	12.6%	62.2
3	Flintshire	10.2%	61.9
4	Ceredigion	10.0%	61.4
5	Gwynedd	11.4%	61.1
6	Powys	8.0%	59.6
7	Swansea	18.4%	59.1
8	Carmarthenshire	13.1%	58.7
9	Neath Port Talbot	20.7%	55.8
10	Denbighshire	15.2%	55.6
11	Conwy	14.7%	55.5
12	Bridgend	16.8%	54.8
13	Cardiff	18.9%	54.0
14	Isle of Anglesey	15.1%	53.8
15	Torfaen	15.8%	53.4
16	Pembrokeshire	14.8%	53.2
17	Newport	19.0%	52.8
18	Wrexham	16.0%	51.0
19	Rhondda,Cynon,Taf	20.7%	50.5
20	Caerphilly	21.0%	50.0
21	Merthyr Tydfil	20.2%	48.9
22	Blaenau Gwent	27.1%	41.8

Less than 5%
between
20th and 12th

L2 Threshold Including E/W&M – LA Comparison



Page 38



Capped Point Score– LA Comparison



Rank	LA	FSM	CPS
1	Gwynedd	11.4%	362
2	Ceredigion	10.0%	360
3	Isle of Anglesey	15.1%	357
4	Carmarthenshire	13.1%	352
5	Denbighshire	15.2%	352
6	Powys	8.0%	352
7	Neath Port Talbot	20.7%	351
8	Monmouthshire	9.7%	351
9	Vale of Glamorgan	12.6%	350
10	Swansea	18.4%	350
11	Conwy	14.7%	346
12	Pembrokeshire	14.8%	344
13	Flintshire	10.2%	341
14	Merthyr Tydfil	20.2%	340
15	Newport	19.0%	340
16	Torfaen	15.8%	338
17	Rhondda,Cynon,Taf	20.7%	336
18	Bridgend	16.8%	334
19	Cardiff	18.9%	331
20	Wrexham	16.0%	329
21	Caerphilly	21.0%	326
22	Blaenau Gwent	27.1%	316

Less than 15 points
between
21st and 14th

Capped Point Score – LA Comparison



Page 40

